

# The West Chesser

## Rank and File Newsletter

Official Newsletter of the West Chester Chess Club

Thursdays 7-11pm  
 United Methodist Church  
 129 South High Street  
 West Chester, PA

Volume XXXIII, Number 4

Donald Anderson, Editor

### WCCC Schedule

Date(s)	Event (Director)
Dec 20	Holiday Swiss (Anderson)
Dec 27	Holiday Swiss (Anderson)
Jan 3	Holiday Swiss (Anderson)
<b>Jan 5</b>	<b>1st Saturday Quad (White)</b>
Jan 10	Holiday Swiss (Anderson)
Jan 17	Kickoff Swiss (Jay)
<b>Jan 24</b>	<b>Bury Lecture / Kickoff Swiss (Jay)</b>
Jan 31	Kickoff Swiss (Jay)
<b>Feb 2</b>	<b>1st Saturday Quad (White)</b>
Feb 7	Kickoff Swiss (Jay)
Feb 14	Club Championship (Eikerenkoetter)
Feb 21	Club Championship (Eikerenkoetter)
Feb 28	Club Championship (Eikerenkoetter)
<b>Mar 1</b>	<b>1st Saturday Quad (White)</b>
Mar 6	Club Championship (Eikerenkoetter)
Mar 13	March Madness Swiss (Bury)
Mar 20	March Madness Swiss (Bury)
<b>Mar 27</b>	<b>Club Champ Lecture / March Madness Swiss (Bury)</b>
Apr 3	March Madness Swiss (Bury)
<b>Apr 5</b>	<b>1st Saturday Quad (White)</b>
Apr 10	Spring Swiss (Anderson)

### New Championship Qualifications

At least 12 games played qualify you to compete for the club champion.

But at our annual business meeting a new format using the point system, to begin at the end of this year's championship event, was proposed and adopted. Total actual points from the tournaments will now determine qualification.

For example, if a player with results in the 1<sup>st</sup> event is 3-1, he has 3 points. In the 2<sup>nd</sup> event that player is 2-2. He then has 5 accumulative points. And so on.

Only the top 8 players will play for club champion. Everyone else will play in the reserve section.

The top section will be played as a round robin with the 8<sup>th</sup> night for a makeup game, if required. The reserve section will play two 4 game swiss format events. The first one will determine the reserve champion. The second will a "second chance" tournament with some special prize(s) (TBD). Because the "second chance" event overlaps the time of the top section's round robin, these games cannot count toward the next year's point total.

To get everyone back on the same schedule the top section players not participating in a makeup game will be in a one time random pairing rated game.

## WCCC Officers

Donald Anderson, President  
Jim White, Chief TD and Treasurer

## Your Moves

This section of *The West Chess* showcases games played by our members. All members are encouraged to submit any game or combination they have played, with or without commentary.

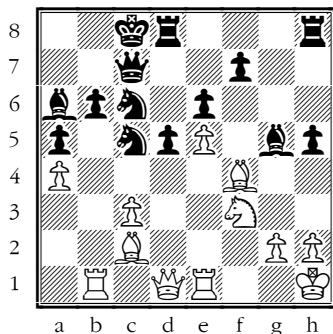
White: **Donald Anderson - 1635**

Black: **Albert Starner - 1600**

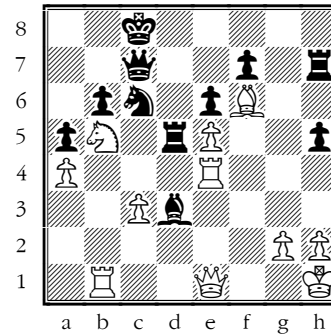
Event: 1<sup>st</sup> Saturday Quad, Rd. 3

Date: Oct 6, 2007

C05: French Tarrasch **1.e4 e6 2.d4 d5 3.♟d2 ♟f6 4.♞d3 c5 5.c3 ♞e7 6.e5 ♟fd7 7.♟df3 ♟c6 8.a3 a5 9.♟h3 h6 10.0-0** [10.♟f4!? and White can hope to survive] **10...g5 11.♟e1 cxd4 12.f4 dxc3 13.bxc3 ♟b6+ 14.♟h1 gxf4 15.♞b1 ♟c7 16.♞xf4 h5** Lots of pawn islands in the game. **17.♟f3 b6** [Weaker is 17...♟dxe5 18.♟xe5 ♟xe5 19.♞b5+ ♞d7 20.♞xd7+ ♞xd7 21.c4+-; No better is 17...♟cxe5 18.♟xe5 ♟xe5 19.♞b5+ ♞d8 20.♟g5+-] **18.a4 ♟c5** [18...♟dxe5 19.♞b5 ♞d7 20.♞xc6 ♟xc6 21.♟xe5 (21.♞xe5?! f6 22.♞d4 e5±) 21...♟xa4 22.♟e2+-; Not 18...♟cxe5 19.♟xe5 ♟xe5 20.♞b5+ ♞d7 21.♞xd7+ ♞xd7 22.c4±] **19.♞c2 ♞a6 20.♞e1 0-0-0** That doesn't look like a safe castle **21.♟hg5 ♞xg5**



**22.♞xg5 ♞d7 23.♞f6** The white bishop on an outpost **23...♟e4** Threatening ..♟f2+ forking the Queen. **24.♞xe4 dxe4 25.♟d4 ♞h7 26.♞xe4 ♞d5 27.♟e1 ♞d3 28.♟b5**



**28...♞xb5 29.axb5 ♟e7 30.♞d4 ♟g6??** [♟30...♟g8 31.♞h4 ♞g7 32.♞xd5 exd5+-] **31.♞xd5 exd5 32.♟e3** [♟32.c4!? keeps an even firmer grip 32...♟b8 33.cxd5+-] **32...h4 33.♞c1 ♞h5 34.c4 d4 35.♟xd4 ♟xe5??** the pressure is too much, Black crumbles **36.♞xh4 ♞f5?? 37.♞g3 f6 38.h3 ♟b7 39.♞xe5** [♟39.c5 and White has triumphed 39...♟c7 40.♟e3+-] **39...♞xe5± 40.♞d1 ♞e8?** [♟40...♟c7?!] **41.♟xf6 ♟e4??** Black falls apart [41...♟c7+-] **42.♟xb6 a4** [42...♞h8 cannot undo what has already been done 43.♟a6+ (43.♟xa5?? is impossible because of the following mate in 3 43...♞xh3+ 44.♟g1 ♟e3+ 45.♟f1 ♞h1#) 43...♟b8 44.♟d6+ ♟b7 45.♟g3+-] **43.♟a6+ [♟43.♞d5 nails it down 43...♟xc4 44.♞c5+ ♟xc5 45.♟xc5+ ♟d7+-] 43...♟b8 44.♟xa4** [♟44.b6 seems even better 44...♟b7 45.♟b5+-] **44...♟h4** [44...♞g8 a fruitless try to alter the course of the game 45.Qa2 Rh8 46.♟a3+-] **45.♟a1 ♞e2 46.b6 ♟e7 47.♟a7+ [47.♞d8+! ♟xd8 48.♟a7+ ♟c8 49.b7+ ♟d7 50.b8♟+ ♟e6 51.♟a6+ ♟e7 52.♟ba7+ ♟d7 53.♟c5+ ♟e8 54.♟g6+ ♟d8 55.♟gb6+ ♟e8 56.♟h5+ ♟e7 57.♟h4+ ♟e8 58.♟h8+ ♟f7 59.♟bf6#] 47...♟xa7+- 48.bxa7+ ♟xa7 49.♞c1 1-0**

White: **Roy Eikerenkoetter - 1702**

Black: **James Joline - 1786**

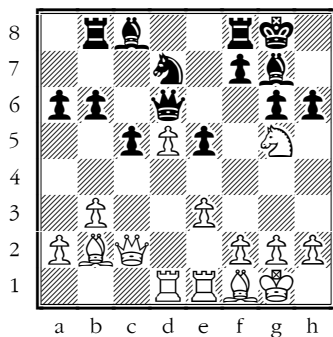
Event: Susquehanna Valley Open

Date: July 22, 2007

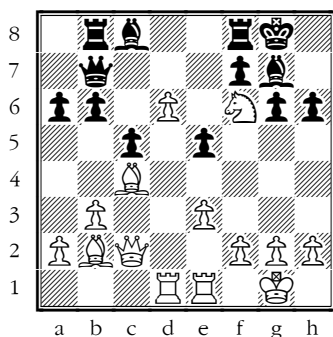
Notes by Roy Eikerenkoetter

**1.♟f3 g6 2.c4 ♞g7 3.d4 ♟f6 4.♟c3 d6 5.e3** [5.e4 seems warranted, but the text is not bad.] **5.. 0-0 6.♞d3 ♟bd7 7.0-0 c5 8.b3 a6 9.♞b2 e6 10.♟c2 ♞b8 11.♞ad1 ♟c7 12.♞fe1 b6 13.♞f1 e5?!** Too soon; Black is not fully mobilized. **14.dxe5 dxe5 15.♟d5 ♟xd5 16.cxd5 ♟d6 17.♟g5?** [17.e4 would have provided more support for the passed pawn. If then 17..♟f6, White would have a definite advantage. With 17.♟g5? ♟f6, Black would be almost equal.]

17..h6?? 18.♖e4? ♖c7



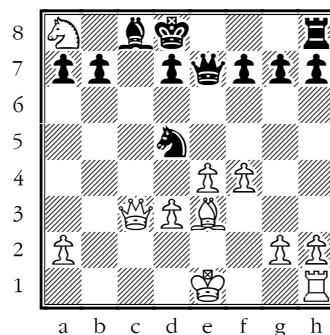
[Fritz shows a beautiful combo that I completely missed: 18.♖e6! and 18..♗e8 is forced and I would win Black's "good" bishop because if 18..fxe6?? 19.dxe6 ♖e7 20.exd7 ♗xd7 21.♖xg6 and Black could not survive.]19.d6 ♖b7 20.♗c4 ♖f6?? 21.♗xf6+! 1-0



Black must be mated or lose more material: If 21..♗xf6 22.♖xg6+ etc.

White: **Charles Jay - 1510**  
 Black: **Kevin Pytel - 1531**  
 Event: NA  
 Date: 2007

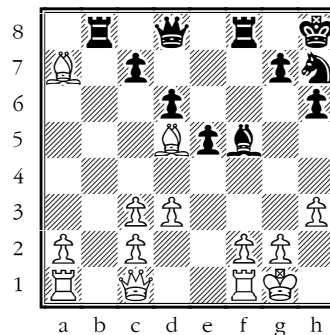
1.e4 e5 2.♗f3 ♗c6 3.d4 exd4 4.♗xd4 ♗c5 5.♗e3 ♖e7 6.♗c3 ♗f6 7.♗d3?? Blocking the defense of the Knight at d4. 7...♗xd4 8.♗b5 ♗e5 9.f4 ♗xb2 10.♗xc7+ ♖d8 11.♗xa8 ♗xa1 12.♖xa1 ♗b4 13.♖c3 ♗xd3+ 14.cxd3 ♗d5



15.♖xg7 ♖f6 16.♖g3 ♖a1+ 17.♖f2 ♖xh1 18.♖g5+ ♗e7 19.♗c5 ♗e8 20.♖e5 Threatening 21.♖c7# 20...♗d5? 21.♖xd5 ♖a1 22.♗d4 ♖c1 23.♖g5+ 1-0

White: **Donald Anderson - 1644**  
 Black: **Mel Ross - 1875**  
 Event: Thanksgiving Swiss  
 Date: Dec 13, 2007

C42: Petroff Defence 1.e4 e5 2.♗f3 ♗f6 3.♗c3 ♗b4 4.d3 ♗c6 5.♗d2 d6 6.h3 h6 7.♗e2 ♗e6 8.0-0 0-0 9.♖c1 ♗d4 10.♗d1 ♗h7 11.♗e3 ♗xc3 12.bxc3 ♗xf3+ 13.♗xf3 f5? 14.exf5 ♗xf5 15.♗xb7 ♗b8 16.♗d5+ ♖h8 17.♗xa7



Black's Rook is lost. 17...♖h4? 18.♗xb8 ♗g5 [18...♗xb8] 19.♗b1 ♗xh3 Trying to demolish the pawn structure. 20.♖e3! [20.gxh3?? ♗gxh3] 20...♗f4 21.♗b4! [21.g3?! ♖g4] 21...e4 22.♗xe4 ♖g4 23.♖g3 ♗xg2?? [23...♖xg3 24.fxg3 ♗xf1+ 25.♖xf1+-] 24.♗xg2 ♗xb4 25.cxb4 1-0

## Morphy Submissions

No games submitted for this newsletter.

## 2008 Club Championship Qualifiers (12 games)

The following persons qualify for the 2008 club championship: Michael Bury, Joe Mucerino, Larry Saxby, Mel Ross, Keith Johnson, Rosti Grinberg, Shinan Jin, Roy Eikerenkoetter, Jim White, Donald Anderson, Jim Merickel, Steve Volpone, Charles Jay, Francis McDyer, Mark Melvin, Gabriel Bury, Pranav Ranganathan, Margaret Brakel, Andrew Fleming, and Ashish Kumbhardare.

With 4 games left before the tournament these people are on the bubble: Joe Orraca (9), Prerna Ranganathan (11), Peter Mason (9) and Hans Hermans (8). The following can not qualify: Jerry O'Rourke (7), Greg Shaffer (6), Hal Marmorstein (4), Rob Upleger (1), Alex Bury (7), Sundar Arunapuram (3), Preneeth Denheluri (4), Isaac Chen (1), Preeti Arunapuram (4), Prashant Arunapuram (3), Sangeetha Kannan (3), Jerry O'Rourke, Jr ( 4), Shalini Kannan (3), Kunal Lobo (4), Steve Nanis (1), James Conaway (1), and Nick Pino (2).

Anyone not qualifying may play in the tournament but cannot claim the title/prizes.

### Halloween Swiss, Oct 18 thru Nov 8, 2007

Pair Num	Player Name USCF ID / Rtg (Pre->Post)	Total Pts	Round 1	Round 2	Round 3	Round 4	Round 5
1	MICHAEL JAMES BURY PA  10182964 / R: 2200 ->2200	3.5	W	9 W	4 D	3 W	5
2	LARRY SAXBY PA  12627211 / R: 1909 ->1917	3.5	W	8 D	6 W	11 W	3
3	MEL ROSS PA  12530794 / R: 1875 ->1879	2.5	W	14 W	7 D	1 L	2
4	KEITH B JOHNSON PA  10165504 / R: 1820 ->1818	2.5	W	10 L	1 W	13 D	7
5	GREGORY S SHAFFER PA  12402490 / R: 1713 ->1733	2.5	H	0 W	13 W	6 L	1
6	ROY C EIKERENKOETTER PA  10159130 / R: 1672 ->1670	2.5	W	15 D	2 L	5 W	10
7	DONALD R ANDERSON PA  12411156 / R: 1644 ->1647	2.5	W	16 L	3 W	12 D	4
8	FRANCIS MC DYER PA  12899243 / R: 1385 ->1439	2.5	L	2 W	14 H	0 W	18
9	CHARLES R JAY PA  12467954 / R: 1530 ->1538	2.0	L	1 L	11 B	0 W	13
10	GABRIEL BURY PA  12883977 / R: 1188 ->1191	2.0	L	4 W	17 W	15 L	6
11	JAMES J WHITE DE   12548044 / R: 1643 ->1649	1.5	H	0 W	9 L	2 U	0
12	NICHOLAS, J PINO PA   13811843 / R: Unrated->1158P2	1.5	H	0 U	0 L	7 W	16

13	JAMES G MERICKEL	1.0	W	17 L	5 L	4 L	9
PA	12483017 / R: 1637 ->1601						
14	MARK MELVIN	1.0	L	3 L	8 W	16 U	0
PA	12939291 / R: 1294 ->1282						
15	PETER MASON	0.5	L	6 H	0 L	10 U	0
PA	12923028 / R: 874 -> 865						
16	MARGARET E BRAKEL	0.5	L	7 H	0 L	14 L	12
PA	11191177 / R: 768 -> 759						
17	ASHISH R KUMBHARDARE	0.5	L	13 L	10 H	0 U	0
PA	13665618 / R: 466 -> 464						
18	STEPHEN PAUL VOLPONE	0.0	U	0 U	0 U	0 L	8
PA	13302547 / R: 1523 ->1500						

H - ½ Pt Bye    B - 1 Pt Bye    X - Forfeit Win    F - Forfeit Loss

### Thanksgiving Swiss, Nov 15 thru Dec 13, 2007

Pair Num	Player Name USCF ID / Rtg (Pre->Post)	Total Pts	Round 1	Round 2	Round 3	Round 4
1	MICHAEL JAMES BURY 10182964 / R: 2200 ->2200	3.5	W 9	W 12	D 5	W 2
2	LARRY SAXBY 12627211 / R: 1898 ->1906	3.0	W 17	W 4	W 3	L 1
3	DONALD R ANDERSON 12411156 / R: 1639 ->1694	3.0	W 16	W 8	L 2	W 5
4	ROY C EIKERENKOETTER 10159130 / R: 1655 ->1683	3.0	W 15	L 2	W 9	W 8
5	MEL ROSS 12530794 / R: 1884 ->1881	2.5	W 18	W 13	D 1	L 3
6	GREGORY S SHAFFER 12402490 / R: 1733 ->1745	2.5	H 0	W 15	U 0	W 12
7	STEPHEN PAUL VOLPONE 13302547 / R: 1500 ->1542	2.5	H 0	W 14	W 13	U 0
8	KEITH B JOHNSON 10165504 / R: 1809 ->1780	2.0	B 0	L 3	W 14	L 4
9	ANDREW J FLEMING 12877894 / R: 1485 ->1500	2.0	L 1	W 10	L 4	W 14
10	GABRIEL BURY 12883977 / R: 1174 ->1258	2.0	L 12	L 9	W 15	W 18
11	MARGARET E BRAKEL 11191177 / R: 750 -> 760	2.0	L 13	W 19	H 0	H 0

12	JAMES J WHITE	1.5	W	10	L	1	H	0	L	6
DE	12548044 / R: 1650	->1641								
13	JAMES G MERICKEL	1.0	W	11	L	5	L	7	U	0
PA	12483017 / R: 1688	->1662								
14	CHARLES R JAY	1.0	W	19	L	7	L	8	L	9
PA	12467954 / R: 1500	->1500								
15	MARK MELVIN	1.0	L	4	L	6	L	10	W	20
PA	12939291 / R: 1282	->1258								
16	PRANAV S RANGANATHAN	1.0	L	3	B	0	U	0	U	0
PA	13474114 / R: 998	-> 996								
17	NICHOLAS, J PINO	0.5	L	2	H	0	U	0	U	0
PA	13811843 / R: 1465P4	->1465P5								
18	FRANCIS MC DYER	0.5	L	5	H	0	U	0	L	10
PA	12899243 / R: 1439	->1408								
19	PRERNA S RANGANATHAN	0.5	L	14	L	11	H	0	U	0
PA	13732581 / R: 478P25	-> 465								
20	JAMES EARL CONAWAY III	0.0	U	0	U	0	U	0	L	15
PA	13834570 / R: Unrated	-> 858P1								

H - ½ Pt Bye    B - 1 Pt Bye    X - Forfeit Win    F - Forfeit Loss

THE WEST CHESSER  
 RANK AND FILE NEWSLETTER  
 904 Sage Road  
 West Chester, PA 19382