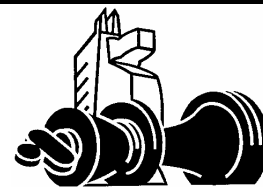


# The West Chesser



Rank and File Newsletter

Official Newsletter of the West Chester Chess Club

Thursdays 7-11pm

United Methodist Church

129 South High Street

West Chester, PA

Volume XXXII, Number 4

Donald Anderson, Editor

## WCCC Schedule

Date(s)	Event (Director)
Nov 16	Thanksgiving Swiss (Anderson)
<b>Nov 23</b>	<b>Closed. Thanksgiving Day.</b>
Nov 30	Thanksgiving Swiss (Anderson) / Club Elections @ 7:15 pm / Pizza Night
<b>Dec 2</b>	<b>1st Saturday Quad (White)</b>
Dec 7	Holiday Swiss (Anderson)
Dec 14	Holiday Swiss (Anderson)
Dec 21	Holiday Swiss (Anderson)
Dec 28	Holiday Swiss (Anderson)
Jan 4	Kickoff Swiss (Eikerenkoetter)
<b>Jan 6</b>	<b>1st Saturday Quad (White)</b>
Jan 11	Kickoff Swiss (Eikerenkoetter)
Jan 18	Kickoff Swiss (Eikerenkoetter)
Jan 25	Kickoff Swiss (Eikerenkoetter)
Feb 1	Club Championship (Eikerenkoetter)
<b>Feb 3</b>	<b>1st Saturday Quad (White)</b>
Feb 8	Club Championship (Eikerenkoetter)
Feb 15	Club Championship (Eikerenkoetter)
Feb 22	Club Championship (Eikerenkoetter)
Mar 1	March Madness Swiss (Anderson)
<b>Mar 3</b>	<b>1st Saturday Quad (White)</b>
Mar 8	March Madness Swiss (Anderson)
Mar 15	March Madness Swiss (Anderson)
Mar 22	March Madness Swiss (Anderson)

## Morphy Winners



Paul Charles Morphy (born in New Orleans on June 22, 1837 - July 10, 1884), the "The Pride and Sorrow of Chess," is considered since the creation of the modern rules of chess to have been the greatest chess master of his time, and unofficially World Chess Champion.

From the age of 8 he played hundreds of games against the best players. He played 227 competitive games during his lifetime, winning 83 percent of them.

The 1<sup>st</sup> American Chess Congress (NYC, 1857), and precursor to the USCF (1937), organized a tournament that Morphy dominated, receiving the credentials of "champion of chess" .

In 1858, Morphy went to Europe to challenge their best chess players. He stayed in England for 3 months trying to arrange a match with Staunton. But Staunton claimed he had more serious things to do and avoided him.

By 1867 Morphy's mental state began to decline. Suffering from delusions of persecution he soon withdrew from society. On July 10, 1884 he died from a stroke. He was just 47 years old.

Paul Morphy is known as a brilliant chess tactician. In honor of that talent we held the Morphy Swiss this past June with prizes for the best combinations: \$20.00 for the best one, \$10.00 to the runner up and \$5.00 for honorable mention. The games were published (XXXII, No 3 and Addendum), chess club voted, and the results are in:

The winners are:

1st Prize - Michael Bury (Donald Anderson – Bury Round 1, game3, page 5).

2nd Prize – Joe Mucerino (Keith Johnson – Mucerino Round 2, game 4).

Honorable Mention – Joe Mucerino (Mucerino - Alex Bury Round 1, game, page 4).

## WCCC Officers

Donald Anderson, President

Jim White, Chief TD and Treasurer

## Your Moves

This section of *The West Chesser* showcases games played by our members. All members are encouraged to submit any game or combination they have played, with or without commentary.

White: **Roy Eikerenkoetter – 1644**

Black: **Bob Bellia - 1672**

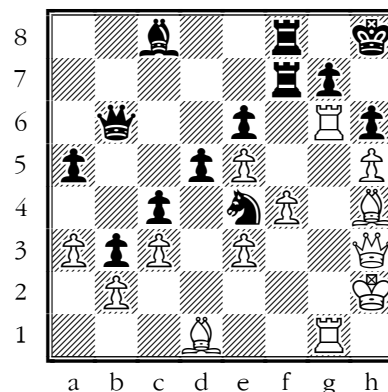
Event: 1<sup>st</sup> Saturday Quad

Date: August 5, 2006

Just a week before, as Black, I lost to Bellia in a sharp Sicilian Defense. I committed a fatal blunder in the opening when I had the superior position. For this encounter, I chose a boring, positional setup to create a pawn formation that might be foreign to him. Unwittingly, he constructed a pawn prison for his queen's bishop, which was a major factor in the outcome of this game.

**1.d4 e6 2.♟f3 ♟f6** After 1..e6, White often plays something like 2.c4 or 2.g3. **3.♞g5** This move commences the Torre Attack. **3...♞e7 4.♟c3 d5 5.e3 ♟bd7 6.♞e2 c5 7.0-0 a6 8.♞e1 h6 9.♞h4 0-0 10.h3** I wanted to retain my "Torre" bishop for a white. **10...c4?!** Maybe Bellia was uncomfortable

with the tension in the center and decided to seize more space. But if he wanted to win, he needed to keep the pawn tension alive and to try to open the c-file to his advantage. That quiet move, c5 to c4, had a profound, irrevocable effect on the rest of the game. **11.♞f1** Now that the center was locked and Black controlled the queenside, I considered mounting an attack where I was stronger: on the kingside. **11...b5 12.a3 ♞b7 13.♞g3 ♞c6 14.♟e5 ♟xe5?!** Much better was 14..♞c1! or 14..♞b6 with the idea of permitting 15.♟xc6??, getting rid of his "bad" bishop. **15.dxe5** For my attack, I needed to keep his Knight off the f6 square. **15...♟h7** I would have chosen 15..♟d7 but even so neither side had an advantage yet. **16.♞g4** The idea was to prevent most of Black's pieces from assisting in the defense of his King. I would tuck my King away, pry open the g-file and pawn-storm his position. **16...♞b6 17.♞ed1 ♞ad8 18.h4 ♞d7 19.♟e2 ♞fd8 20.♟d4 ♞b7? 21.c3 ♟f8 22.f4 f5! 23.♞h3** It was important to keep Black tied up. **23...♞c5 24.h5 a5 25.♞f2 b4 26.♞ab1 b3 27.♞e2 ♞f7 28.g4 f×g4 29.♞×g4 ♞×d4!?** Since neither of Black's Bishops was effective, he used one to chop off my strong Knight to reduce the pressure on his e6-pawn. **30.♞×d4** This retained my strong black squared pawn phalanx (keeping Black's pawns on white squares) and denied Black any chances of a pawn break-through. **30...♞e8 31.♞h2 ♟d7 32.♞f1 ♟c5** With 32.♞f1 I prevented 32..♟xe5! 33.♞e2 I could permit Black's Knight to occupy the e4 square, where it would be relatively harmless, but not d3. Interesting, the Fritz opinion is that the position was still even! **33...♞ef8 34.♞h4 ♟a4 35.♞d2 ♞c8 36.♞g1 ♟c5 37.♞d1 ♟e4 38.♞dg2 ♞h8 39.♞g6!**

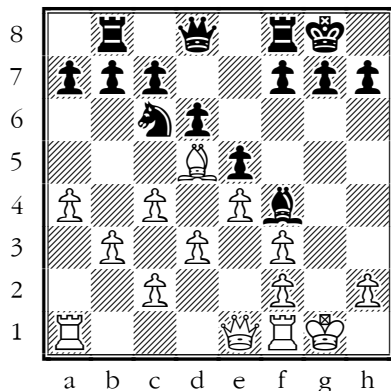


I thought there was a good chance Black would blunder here, but he actually had no good moves left. Fritz claims that after this move White was winning. It says, if 39..♞a7 40.♞g4! with ♞f6! to follow. The same scheme if 39..♞b7 etc. I did not

realize that my Queen could afford to abandon my weak e-pawn since Black's capture of it would not yield perpetual checks or stop my decisive attack. **39...♙d7 40.♙g4!**? This spoiled the clearest way to the win. It's a second-best move because it interfered with the power of my rooks. [The winning move according to Fritz is 40.♙g4 If ... 40...♙xe3 41.♙f6! ♗xf6 42.exf6 ♙f2+ (42...e5 43.fxg7+ ♖g8 44.gxf8♗+ ♜xf8 45.♙g8+ ♖e7 46.♙h4+ ♖d6 47.fxe5+ ♙xe5+ 48.♙g3 White is winning.) 43.♙g2] **40...♗c5?** A stronger defense would have been 40..♗d2! And White would have had ample chances to go wrong. [I was not afraid of 40...♗xc3?? 41.bxc3 b2 42.♙f5! ♙xf5 43.♙xh6+ g×h6 (43...♖g8 44.♙xg7+!!) 44.♙g4 ♙g5 45.♙xg5 b1♙ 46.♙f6+] **41.f5!** [Fritz continues: If 41.♙f5! ♙e8 (41...♙xf5 42.♙f6! ♙g5 43.♙xh6+ ♖g8 44.♙xg5 ♖f7 45.♙xg7+ ♖e8 46.♙e7+) 42.♙g3! ♙a7 43.♙f6! exf5 44.♙xh6+] **41...♙e8??** To save the game Black had to try 41..♙c7, but White's attack at this point was irresistible. Black's pieces were on bad square and could not get to good defensive ones. **42.f6! ♙g8 43.f×g7+** [Fritz: Also 43.♙f5! If .. 43...exf5 44.♖g3!] **43...♙g×g7 44.♙f6 ♙×f6 45.exf6 ♙c7+ 46.♙g3 ♙×g3+ 47.♙×g3 ♙×g6 48.h×g6 ♗e4 49.♙f3 ♗g5 50.♙f1 ♖g8 51.f7+ 1-0**

White: **Debbie Rothman – 582**  
 Black: **Margaret Brakel -**  
 Event: Coatesville Swiss  
 Date: October 16, 2006

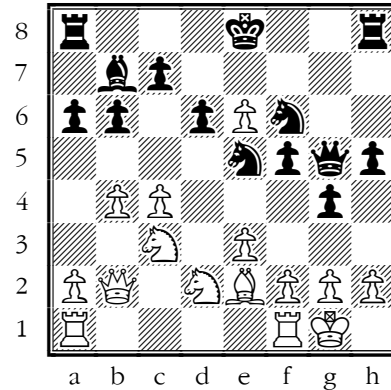
**1.e4 e5 2.♗f3 ♗c6 3.♙c4 ♗f6 4.♗c3 d6 5.000 ♙g4 6.d3 ♙e7 7.♗d5 000 8.♙g5 ♗×d5 9.♙×d5 ♙×g5 10.♙e1 ♙b8 11.b3 ♙×f3 12.g×f3 ♙f4 13.a4?**



**13...♙h4 14.b4?? ♙×h2# 0-1**

White: **Albert Starner –**  
 Black: **Charles Jay -**  
 Event: 1<sup>st</sup> Saturday Quad  
 Date: October 7, 2006

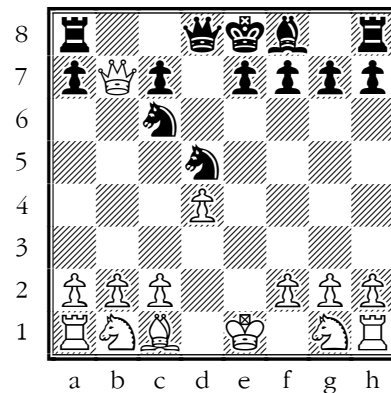
**1.d4 b6 2.c4 ♙b7 3.♗c3 d6 4.♗f3 ♗d7 5.e3 e6 6.♙e2 a6 7.0-0 h6 8.♙c2 g5 9.b3 g4 10.♗d2 h5 11.♙b2 ♙g7 12.♗ce4 f5 13.d5 ♙×b2 14.♙×b2 ♗e5 15.♗c3 ♙g5 16.d×e6 ♗f6 17.b4**



**17..♗f3+ 18.♙×f3 g×f3 19.g3 h4 20.♗d5 h×g3 21.♗×f6+ ♖e7 22.h×g3 ♙h6 23.♗h5 ♙×h5 24.♙g7+ ♖×e6 0-1**

White: **Donald Anderson -**  
 Black: **Mel Ross -**  
 Event: Summer's End Swiss - Rd 4  
 Date: Oct 26, 2006

B01: Scandinavian Defence **1.e4 d5 2.e×d5 ♗f6 3.d4 ♙g4 4.♙e2 ♙×e2 5.♙×e2 ♗×d5 6.♙b5+ ♗c6 7.♙×b7??**

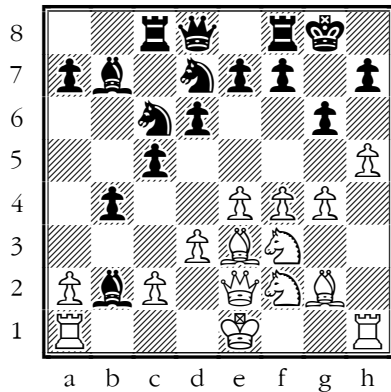


[7.♗f3!?= is worthy of consideration] **7...♗×d4! 8.♗a3 e5 9.c3 ♙×a3 10.c×d4 ♙b4+ 11.♙d2??** [The only move 11.♖f1 would save the game 11...0-

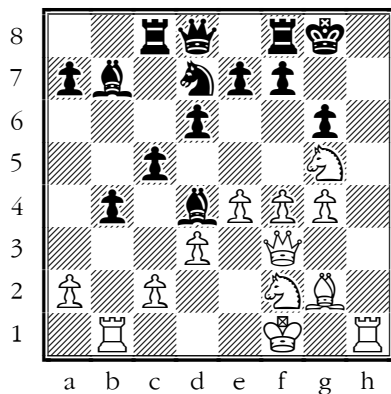
0 12.dxe5=] 11...♙xd2+ 12.♚xd2 0-0 13.♘h3 ♖f6  
 14.♗b4 c5 15.♗c4 cxd4 16.♗e2 ♗b6 17.b4  
 [17.♗he1 ♗xb2+ 18.♗f1 Pulling the King to safety.]  
 17...♗ac8 18.♗b3 ♗c3 19.♗b2 d3+ 20.♗d1 ♗fc8  
 21.a3 e4 22.♗e1 ♗c6 [22...♗c2 23.♗c1 ♗xc1+  
 (23...♗xb2?? is refuted decisively by mate in 3  
 24.♗xc8+ ♗d8 25.♗xd8+ ♖e8 26.♗xe8#) 24.♗xc1  
 ♗xc1+ 25.♗xc1 e3+] 23.♗e3 ♗c2 24.♗b1 ♗c3 0-1

White: Keith Brian Johnson – 1762  
 Black: Eric Brandt - 1846  
 Event: 1<sup>st</sup> Saturday Quads, Rd 3  
 Date: November 4, 2006

1 e4 d6 2 ♖c3 ♖f6 3 f4 g6 4 ♖f3 ♗g7 5 g3  
 c6 6 ♗e2 b5 7 ♗g2 ♗b7 8 d3 b4 9 ♖d1 c5  
 10 ♖f2 O-O 11 g4 ♖c6 12 ♗e3 ♗c8 13 h4  
 ♖d7 14 h5 ♗xb2 I saw that his knight move  
 cleared the f-file, but for some reason I overlooked  
 that it also cleared his bishop's diagonal. At this  
 point, I thought about sacrificing the rook with h×g6,  
 but decided against it.

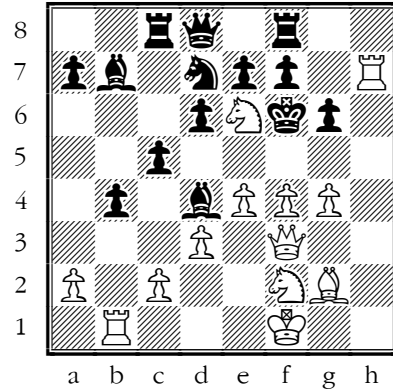


15 ♗b1 ♗c3+ 16 ♗f1 ♗g7 17 h×g6 h×g6 18  
 ♖g5 ♖d4 19 ♗xd4 ♗xd4 20 ♗f3 ...

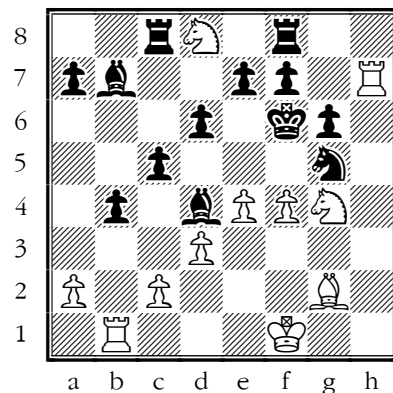


If Black now plays 20 ... ♗g7 21 ♗h3 ♖f6, then 22  
 e5 ♗xg2+ 23 ♗xg2 ♗e8 24 exf6 exf6 25 ♗h7+

♗f8 26 ♖ge4, and White is winning. 20 ... ♗g7  
 21 ♗h7+ ♗f6 22 ♖e6 ...



I can't give this exclamation points, since 22 e5+  
 turns out to lead to mate in fewer moves--22 e5+  
 dxe5 23 fxe5+ ♗xe5 [not 23 ... ♗xg5 24 ♖h3#] 24  
 ♗g3+ ♗f6 25 ♗f4#; but although the same mate  
 ensues after 22 e5+ ♖xe5, 22 e5+ ♗xe5+ gives the  
 king an apparent escape route via d4 and c3, and  
 although I had no doubt there would be a mate in  
 there somewhere, I didn't see 22 e5+ ♗xe5 23  
 fxe5+ ♗xe5 24 ♗e3+ ♗e4 25 ♗xe4+ ♗f6 26  
 ♗f4#. Since 22 ♖e6 ensures that Black will have  
 to give up his queen in order to prevent checkmate,  
 and since I saw that the knight couldn't be taken  
 [22 ♖e6 fxe6 23 g5# or 22 ♖e6 ♗xe6 23 f5+ ♗e5  
 24 ♗g3+ ♗f6 25 g5# or 22 ♖e6 ♗xe6 23 f5+ ♗f6  
 24 g5+ ♗xg5 {24 ... ♗e5 ♗g3#} 25 ♗g3+ ♗f6 26  
 ♖g4+ ♗g5 27 ♖e3+ ♗f6 28 ♗h4+ ♗e5 {28 ... g5  
 29 ♖g4#} 29 ♖c4#], and since putting the knight  
 uncapturably en prise two different ways while  
 preventing the king's escape via 22 ... e6 --not to  
 mention threatening mate via 23 g5--had a high  
 aesthetic value, I played the knight move. The  
 game finished 22 ... ♖e5 23 ♖xd8 ♖xf3 24  
 g5+ ♖xg5 25 ♖g4# 1-0



Summer's End Swiss, Sept 7 – Sept 28, 2006

		Pre Rating	Post Rating	1	2	3	4	Total
1	Michael Bury	2203	2206	W6	W9	W2	W3	4
2	Keith Johnson	1736	1749	W12	W4	L1	W7	3
3	Mel Ross	1728	1747	W10	E5	W9	L1	3
4	Donald Anderson	1609	1628	W11	L2	W6	W9	3
5	Jim Merickel	1596	1592	W13	L3	W10	U	2
6	Charles Jay	1508	1505	L1	W11	L4	W10	2
7	Gabriel Bury	1159	1139	L9	D8	B	L2	1 ½
8	David Nemeth	795	859	U	D7	W11	U	1 ½
9	Roy Eikerenkoetter	1697	1669	W7	L1	L3	L4	1
10	Francis McDyer	1340	1320	L3	W13	L5	L6	1
11	Margaret Brakel	802	797	L4	L6	L8	W13	1
12	Joe Hooker	1467	1460	L2	U	U	U	0
13	Pranav Ranganathan	739	701	L5	L10	U	L11	0

U – Unplayed      B – 1 Point Bye      H – ½ Point Bye

First Saturday Quad, Oct 7, 2006 (Edited)

Quad 4

		Pre Rating	Post Rating	1	2	3	4	Total
1	Keith Johnson	1749	1777	*	W	D	W	2 ½
2	Eric Brandt	1780	1795	L	*	W	W	2
3	Quentin Guy	1686	1695	D	L	*	W	1 ½
4	Jim White	1750	1712	L	L	L	*	0

Quad 5

		Pre Rating	Post Rating	1	2	3	4	Total
1	Cary Lovelace	1696	1725	*	W	W	D	2 ½
2	Frank Jackson	1687	1686	L	*	D	W	1 ½
3	Roy Eikerenkoetter	1692	1678	L	D	*	D	1
4	Tamara Corey	1669	1658	D	L	D	*	1

Quad 6

		Pre Rating	Post Rating	1	2	3	4	Total
1	Albert Starner	1607	1600	*	X	W	L	2
2	Brian Bucher	1643	1649	F	*	D	W	1 ½
3	Steven Fox	1559	1563	L	D	*	W	1 ½
4	Charles Jay	1505	1502	W	L	L	*	1

X- Forfeit Win    F- Forfeit Loss

Match

		Pre Rating	Post Rating	1	2	Total
1	Jim White	1756	1750	*	D	½
2	Albert Starner	1600	1601	D	*	½

**Quad 7**

		Pre Rating	Post Rating	1	2	3	4	Total
1	Kunal Lobo	1468	1477	*	L	W	W	2
2	Ron Thoman	1405	1427	W	*	D	D	2
3	Richard Martin	1487	1475	L	D	*	W	1 ½
4	Francis McDyer	1320	1302	L	D	L	*	½

**Quad 9**

		Pre Rating	Post Rating	1	2	3	4	Total
1	Hans Hermans	1215	1278	*	W	W	W	3
2	Gabriel Bury	1139	1158	L	*	W	W	2
3	Gregory Klupar	1114	1094	L	L	*	W	1
4	Donell Guy	1012	968	L	L	L	*	0

**Quad 10**

		Pre Rating	Post Rating	1	2	3	4	Total
1	Margaret Brakel	797	906	*	W	W	W	3
2	Todd Snider	943	928	L	*	W	W	2
3	Charles Thornton	804	759	L	L	*	W	1
4	John Connelly	100	100	L	L	L	*	0

**Fall Swiss, October 5 thru October 26, 2006**

		Pre Rating	Post Rating	1	2	3	4	Total
1	Michael Bury	2206	2210	W14	W2	W3	W5	4
2	Mel Ross	1747	1758	W9	L1	W7	W6	3
3	Roy Eikerenkoetter	1678	1697	W15	W5	L1	W8	3
4	Jim White	1712	1726	W7	H	W6	U	2 ½
5	Keith Johnson	1777	1762	W8	L3	W12	L1	2
6	Donald Anderson	1628	1621	W12	W10	L4	L2	2
7	Steve Volpone	1338	1358	L4	W14	L2	W12	2
8	Francis McDyer	1302	1316	L5	W9	W13	L3	2
9	Gabriel Bury	1257	1270	L2	L8	W14	W13	2
10	Jim Merickel	1592	1577	W13	L6	U	U	1
11	Mark Melvin	1117	1163	U	U	U	W14	1
12	Margaret Brakel	906	922	L6	W15	L5	L7	1
13	Pranav Ranganathan	777	770	L10	B	L8	L9	1
14	Charles Jay	1502	1500	L1	L7	L9	L11	0
15	David Nemeth	859	833	L3	L12	U	U	0

U – Unplayed

B – 1 Point Bye

H – ½ Point Bye

West Chester, PA 19382  
904 Sage Road  
**THE WEST CHESSER**  
**RANK AND FILE NEWSLETTER**