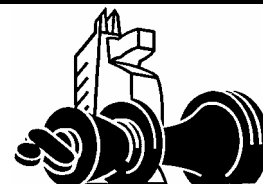


The West Chesser



Rank and File Newsletter

Official Newsletter of the West Chester Chess Club

Thursdays 7-11pm

United Methodist Church

129 South High Street

West Chester, PA

Volume XXXI, Number 4

Donald Anderson, Editor

WCCC Schedule

| Date(s) | Event (Director) |
|---------------|--|
| Nov 24 | Thanksgiving (Closed) |
| Dec 1 | Holiday Swiss (Anderson) |
| Dec 3 | 1st Saturday Quad (White) |
| Dec 8 | Holiday Swiss (Anderson) |
| Dec 15 | Election of Officers /Pizza Night/ Holiday Swiss (Anderson) |
| Dec 22 | Holiday Swiss (Anderson) |
| Dec 29 | Kickoff Swiss (Eikerenkoetter) |
| Jan 5 | Kickoff Swiss (Eikerenkoetter) |
| Jan 7 | 1st Saturday Quad (White) |
| Jan 12 | Kickoff Swiss (Eikerenkoetter) |
| Jan 19 | Kickoff Swiss(Eikerenkoetter) |
| Jan 26 | Club Championship (Eikerenkoetter) |
| Feb 2 | Club Championship (Eikerenkoetter) |
| Feb 9 | Club Championship (Eikerenkoetter) |
| Feb 16 | Club Championship (Eikerenkoetter) |
| Feb 23 | March Madness Swiss (Anderson) |
| Mar 2 | March Madness Swiss (Anderson) |
| Mar 9 | March Madness Swiss (Anderson) |
| Mar 16 | March Madness Swiss (Anderson) |

Championship Qualifiers

These members have **not** qualified (at least 12 rated games in a calendar year beginning from last year's championships) for the 2006 Club Championship. (There are 8 game days left until Jan 26. See schedule above.) Anyone can play in the championship but only qualified players can claim the crown.

| Player | Games Played |
|-----------------|--------------|
| Jim Larsen | 2 |
| Lassaad Sanane | 2 |
| Jim White | 9 |
| Rob Upledger | 6 |
| Charles Shaw | 1 |
| Hal Marmorstein | 10 |
| Shinan Jin | 6 |
| Michael Bury | 9 |
| Santo Mazzeo | 8 |
| Greg Shaffer | 7 |
| Francis McDyer | 5 |
| Alex Karlovitz | 3 |
| Max Karlovitz | 1 |
| Michael Mullin | 2 |
| Brian Schmotzer | 3 |

Chess Boxing

Bulgarian boxer Tihomir Titschko's right hook and fancy footwork were not enough to defeat his opponent. Instead, it was the stocky fighter's mastery of knights and bishops that proved decisive in his successful bid to become the first European chess boxing champion. The match ended in the seventh round when Titschko's opponent, Andreas Schneider of Germany, conceded defeat.

The World Chess Boxing Organization (WCBO), which sponsored the event says that a chess boxing contest can end with a knockout, checkmate, or judges' decision. Schneider's 12 minutes of chess time had nearly elapsed and his king and remaining pawns were in hopeless retreat. He extended his hand to congratulate Titschko.

Chess boxing is one of the newest and most unlikely hybrid sports, designed to test both brain and brawn. A typical match consists of up to 11 alternating rounds of boxing and "blitz" chess sessions. Contestants start with a four-minute chess round, then it's into the ring for a two-minute bout of boxing. A minute's break to tend wounds and remove gloves and the sweaty competitors, towels around their necks, sit down at the chess board again.

While a few spectators said they might one day try chess boxing, most shook their heads at the bizarre sport. One said, "It's hard to imagine coming back from a round of boxing and remembering what you were trying to do on the chess board," and another commented, "You're probably sitting there preoccupied with the pain."

Source: CNN.com, October 6, 2005

WCCC Officers

Donald Anderson, President
Jim White, Chief TD and Treasurer

Chess League Update

In the last newsletter Masterminds Chess Club proposed the Greater Philadelphia Chess Club League. The only club in the U2200 section as was the WCCC. Since the only section is U1600 we declined to participate.

Your Moves

This section of *The West Chesser* showcases games played by our members. All members are encouraged to submit any game or combination they have played, with or without commentary.

White: **Mel Ross - 1727**

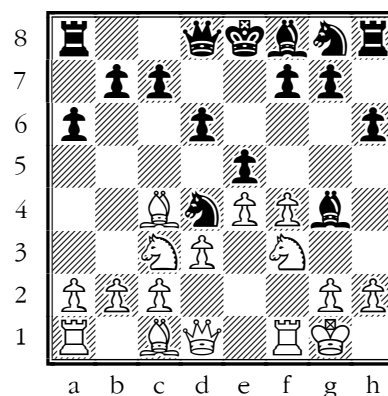
Black: **Donald Anderson - 1674**

Event: Fall Swiss I

Date: October 20, 2005

Mate in 10!

1.e4 e5 2.f4 ♘c6 3.♗f3 d6 4.♕c4 h6 5.d3 a6
6.♘c3 ♗g4 7.0-0 ♗d4??



8.♗xe5!! ♗xd1?? 9.♗xf7+ Black resigned. If
9..♞e7 10.♗d5# 1-0

Summer's End Swiss, Sept 1 – Sept 22, 2005

| | | Pre Rating | Post Rating | 1 | 2 | 3 | 4 | Total |
|----|--------------------|------------|-------------|-----|-----|-----|-----|-------|
| 1 | Keith Johnson | 1751 | 1771 | W12 | W4 | D3 | W6 | 3 ½ |
| 2 | Michael Bury | 2211 | 2200 | L5 | D6 | W12 | W3 | 2 ½ |
| 3 | Mel Ross | 1753 | 1758 | W13 | W5 | D1 | L2 | 2 ½ |
| 4 | Donald Anderson | 1677 | 1674 | H | L1 | W5 | W10 | 2 ½ |
| 5 | Charles Jay | 1500 | 1518 | W2 | L3 | L4 | W12 | 2 |
| 6 | Roy Eikerenkoetter | 1665 | 1669 | U | D2 | W11 | L1 | 1 ½ |
| 7 | Jim Merickel | 1625 | 1626 | W14 | U | U | U | 1 |
| 8 | Alex Karlovitz | 1288 | 1289 | U | U | U | W14 | 1 |
| 9 | Max Karlovitz | 833 | 901 | U | U | U | W11 | 1 |
| 10 | Michael Mullin | 631 | 637 | U | W14 | U | L4 | 1 |
| 11 | Santo Mazzeo | 1075 | 926 | U | D12 | L6 | L9 | ½ |
| 12 | Margaret Brakel | 705 | 719 | L1 | D11 | L2 | L5 | ½ |
| 13 | Francis McDyer | 1130 | 1128 | L3 | U | U | U | 0 |
| 14 | Bryan Schmotzer | UNR | 265 | L7 | L10 | U | L8 | 0 |

U – Unplayed B – 1 Point Bye H – ½ Point Bye

Fall Swiss I, Sept 29 – Oct 20, 2005

| | | Pre Rating | Post Rating | 1 | 2 | 3 | 4 | Total |
|----|--------------------|------------|-------------|-----|-----|----|----|-------|
| 1 | Mel Ross | 1727 | 1775 | W11 | W3 | W7 | W6 | 4 |
| 2 | Alex Karlovitz | 1257 | 1332 | W10 | B | U | W8 | 3 |
| 3 | Keith Johnson | 1771 | 1700 | W8 | L1 | W4 | U | 3 |
| 4 | Jerome Winbush | 1647 | 1637 | W12 | L5 | L3 | W7 | 2 |
| 5 | Michael Bury | 2201 | 2202 | H | W4 | U | U | 1 ½ |
| 6 | Donald Anderson | 1674 | 1642 | L7 | D10 | W8 | L1 | 1 ½ |
| 7 | Margaret Brakel | 825 | 921 | W6 | D9 | L1 | L4 | 1 ½ |
| 8 | Charles Jay | 1500 | 1500 | L3 | W11 | L6 | L2 | 1 |
| 9 | Santo Mazzeo | 926 | 926 | H | D7 | U | U | 1 |
| 10 | Roy Eikerenkoetter | 1638 | 1612 | L2 | D6 | U | U | ½ |
| 11 | Jim Merickel | 1678 | 1646 | L1 | L8 | U | U | 0 |
| 12 | Max Karlovitz | 907 | 907 | L4 | U | U | U | 0 |

U – Unplayed B – 1 Point Bye H – ½ Point Bye

First Saturday Quad, October 1, 2005 (Edited)

Quad 2

| | | Pre Rating | Post Rating | 1 | 2 | 3 | 4 | Total |
|---|---------------|------------|-------------|---|---|---|---|-------|
| 1 | Richard Harry | 1825 | 1844 | * | D | W | W | 2 ½ |
| 2 | Tom Clauson | 1800 | 1812 | D | * | D | W | 2 |
| 3 | Eric Brandt | 1823 | 1820 | L | D | * | W | 1 ½ |
| 4 | Mel Ross | 1757 | 1726 | L | L | L | * | 0 |

Quad 3

| | | Pre Rating | Post Rating | 1 | 2 | 3 | 4 | Total |
|---|--------------------|------------|-------------|---|---|---|---|-------|
| 1 | Steve Pavolic | 1759 | 1768 | * | W | W | L | 2 |
| 2 | Jim White | 1729 | 1743 | L | * | W | W | 2 |
| 3 | Charles Shaw | 1800 | 1780 | L | L | * | W | 1 |
| 4 | Roy Eikerenkoetter | 1639 | 1640 | W | L | L | * | 1 |

Quad 4

| | | Pre Rating | Post Rating | 1 | 2 | 3 | 4 | Total |
|---|----------------|------------|-------------|---|---|---|---|-------|
| 1 | Jim Merickel | 1626 | 1682 | * | W | W | W | 3 |
| 2 | Cary Lovelace | 1638 | 1647 | L | * | W | W | 2 |
| 3 | Albert Starner | 1604 | 1600 | L | L | * | W | 1 |
| 4 | Charles Jay | 1518 | 1500 | L | L | L | * | 0 |

Quad 5

| | | Pre Rating | Post Rating | 1 | 2 | 3 | 4 | Total |
|---|------------------|------------|-------------|---|---|---|---|-------|
| 1 | Nicholas Strauss | 1456 | 1493 | * | D | W | W | 2 ½ |
| 2 | Shinan Jin | 1474 | 1465 | D | * | L | W | 1 ½ |
| 3 | Will Moyer | 1439 | 1420 | L | W | * | L | 1 |
| 4 | Greg Cravetz | 1340 | 1339 | L | L | W | * | 1 |

Swiss

| | | Pre Rating | Post Rating | 1 | 2 | 3 | Total |
|---|------------------|------------|-------------|----|----|----|-------|
| 1 | Emil Madi | 1262 | 1325 | W4 | W2 | W3 | 3 |
| 2 | Raymond Cravetz | 1207 | 1203 | W6 | L1 | W5 | 2 |
| 3 | Yu Ran Zhang | 1278 | 1248 | W5 | D4 | L1 | 1 ½ |
| 4 | Margaret Brakel | 763 | 843 | L1 | D3 | W6 | 1 ½ |
| 5 | Dan Hackenberger | UNR | 927 | L3 | W6 | L2 | 1 |
| 6 | Jeffrey Stetler | 776 | 733 | L2 | L5 | L4 | 0 |

THE WEST CHESSER
 RANK AND FILE NEWSLETTER
 904 Sage Road
 West Chester, PA 19382