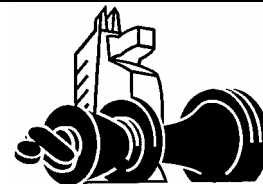


The West Chesser



Rank and File Newsletter

Official Newsletter of the West Chester Chess Club

Wednesdays 7-11pm
United Methodist Church
129 South High Street
West Chester, PA

Volume XXIX, Number 3

Summer 2003

Donald Anderson, Editor

WCCC Schedule

Date(s)	Event (<i>Director</i>)
July 9, 16, 23, 30	Summer Swiss II (Eikerenkoetter)
Aug 2	1 st Saturday Quad (White)
Aug 6, 13, 20, 27	Dollar Swiss* (Eikerenkoetter)
Sept 3, 10, 17, 24	Fall Swiss (Anderson)
Sept 6	1 st Saturday Quad (White)
Oct 1, 8, 15, 22	Haendiges Memorial (Eikerenkoetter)
Oct 4	1 st Saturday Quad (White)

* No entry fee. \$25 Over 1600 and \$25 Under 1600 1st place prizes will be awarded.

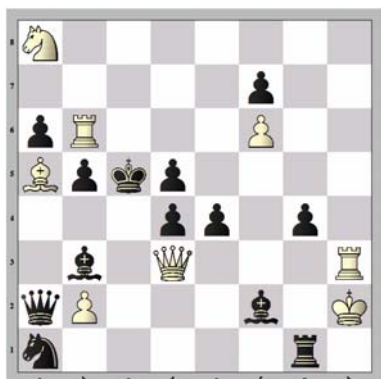
We're Back

Renovations on the United Methodist Church is complete and we are now meeting back at our old venue. Best way to access the building is through the new front entrance on High Street. (For those not familiar with the location it is where we meet for the Saturday Quads, High and Barnard Sts, West Chester. Its diagonal from the 7-11.)

We meet on the basement floor. Head towards your right when you come down the stairs, all the way back to room 7.

Spread the word. Welcome back everyone.

White to Mate in 2



Answer on page 2.

4th Sat QUAD- Newark C.C.

The NCC quad is held monthly at the College Square Shopping Center, 9am sharp, \$20 fee. (40/75, S/D 30).

Plans are being made for "The Newark Open" for the 4th weekend in October. This two day swiss tournament will be 5 rounds. Check Chess Life or contact TD Rick Lathem, at 302-368-8569, for additional information.

WCCC Officers

Keith Johnson, President
 Jim White, Chief TD
 Rob Upleger, Secretary
 Jim White, Treasure

White to Mate in 2

Front Page

Answer: 1. ♖c4+ ♗xc4 2. b4# (1..dxc4 2. ♜h5#;
 1..bxc4 2. ♗b4#)

Your Moves

This section of *The West Chesser* showcases games played by our members. All members are encouraged to submit *any* game or combination they have played, with or without commentary. Some comments or variations not submitted may be included with the assistance of Fritz 8.

White: Roy Eikerenkoetter (1651)
 Black: Donald Anderson (1650)
 Event: Summer Swiss I
 Date: June 18, 2003

[A45] Kings Indian Attack

1. d4 ♗f6 2. ♗g5 h6 3. ♗xf6 exf6 4. e4 d5 5. f3 dxe4
 6. fxe4 f5 7. ♗d3 fxe4
 8. ♖e2 ♗xd4 9. ♗xe4
 Threatening mate with 10. ♗c6+ (see diagram)



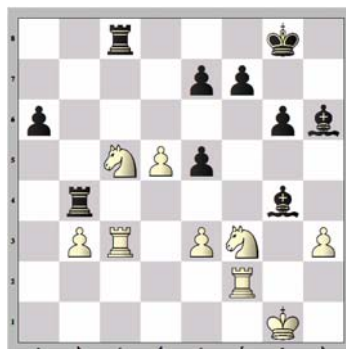
9.. ♗e7 10. ♗c3 0-0
 11. ♗f3 ♖b6 12. 0-0-0
 Now if White can only play ♗d4! 12..c6?
 Best is Bf6. Then if

White plays 13. ♗d4 ♖b7#! with Black giving mate.
 13. ♗h7+ ♗xh7 14. ♖xe7 ♗g8 15. ♗a4 ♖a5
 16. b4?? ♖xa4 17. ♗d8 ♗d7 18. ♗e5 ♖xa2
 19. ♗xd7 ♗xd7 20. ♖xf8+ ♗h7 21. ♖xa8 ♖a1+
 22. ♗d2 ♖d4+ 23. ♗c1 ♖a1+ 1/2-1/2

White: Charles Jay (1504)
 Black: Don Quiring (1854)
 Event: Tri State CC Ladder, Game 60
 Date: NA

E61: King's Indian

1. c4 ♗f6 2. ♗c3 g6 3. ♗f3 ♗g7 4. e3 c5 5. ♗e2 0-0
 6. d4 d6 7. 0-0 ♗bd7 8. b3 a6 9. ♗b2 ♖b8 10. ♖c2 b6
 11. ♗ad1 ♖c7 12. d5 ♗d8 13. ♗d3 ♗g4 14. h3 ♗ge5
 15. ♗h4 ♗xd3 16. ♗xd3 ♗e5 17. ♗d2 b5 18. f4 ♗d7
 19. f5 ♗e5 20. fxc6 hxc6 21. ♗df2 bxc4 22. ♗e4
 cxb3 23. axb3 ♖f8 24. ♗xe5 dxe5 25. ♖c1 ♖b4
 26. ♗f3 ♗f5 27. ♖xc5 ♖xc5 28. ♗xc5 ♗h6 29. ♖c3
 ♖c8 30. g4 ♗xc6?? (.. ♖b5 31. b4 a5 32. ♗xe5 axb4)
 see diagram.



46. b5 1-0

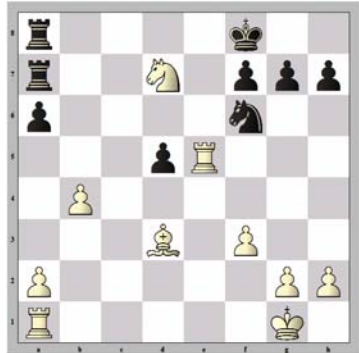
31. hxc6 ♖xc6+ 32. ♖g2
 ♖xc5 33. ♖xc5 ♗xe3+
 34. ♗f1 ♖f4 35. ♖c8+
 ♗g7 36. ♗e2 ♗b6
 37. ♖c6 e4 38. ♗g5 ♗d4
 39. ♖xa6 ♗f6 40. ♗h3
 ♖h4 41. ♗f2 ♗d4 42. d6
 exd6 43. ♖xd6 e3
 44. ♗d3 ♖e4 45. b4 ♗c3

Classic Games

This section of *The West Chesser* showcases classic games of the masters. It is hoped that these gems will be of help you in improving your game. This game is a positional masterpiece. Fischer surprisingly exchanges a good knight for Petrosian's bad bishop. But then his genius makes quick work of Black's position.

White: **Fischer, Robert (2780)**
 Black: **Petrosian, Tigran (2675)**
 Event: Candidates Match, Buenos Aires
 Date: 1971

1.e4 c5 2.♘f3 e6 3.d4 cxd4 4.♗xd4 a6 5.♕d3 ♗c6 6.♗xc6 bxc6 7.0-0 d5 8.c4!? Black achieves a substantial pawn presence in the center. 8..♗f6 9.cxd5 cxd5 10.exd5 exd5 11.♗c3 ♕e7 12.♞a4+! ♞d7± 13.♞e1! [13.♖b5!? axb5 14.♞xa8±] 13...♞xa4 14.♗xa4 ♕e6 15.♕e3 0-0 16.♕c5! ♞fe8 17.♕xe7 ♞xe7 18.b4 ♖f8 19.♗c5 ♕c8 20.f3! ♞ea7? 21.♞e5! ♕d7± 22.♗xd7+!! (see diagram)



One of the most talked about moves in chess history. Yet it wins the game.

22..♞xd7 23.♞c1 ♞d6 24.♞c7 ♗d7 25.♞e2 g6 26.♖f2 h5 27.f4 h4 28.♖f3! f5 29.♖e3 d4+ 30.♖d2 ♗b6 31.♞ee7 ♗d5 32.♞f7+ ♖e8 33.♞b7 ♗xf4?

[33...♞b8! 34.♞a7 ♞a8 35. ♞xa8+ ♖xf7 36. ♕c4 ♖e6 37. ♖d3 and Black is completely helpless.] 34.♕c4 With the decisive threat ♞g7[34.♕c4 ♗e6 35.♞fe7+ ♖d8 36.♕xe6+-] 1-0

The Master's Corner



Pennsylvania State Champ and FIDE Master Rodion Rubenchick demonstrates his chess talents in this issue of the newsletter with a game from the Eastern Open.

White: **Rubenchick, Rodian (2307)**
 Black: **Salvador Rosario (2150)**
 Event: [A33] Eastern Open, Washington, DC
 Date: December 27, 2002

1.♗f3 c5 2.c4 ♗c6 3.d4 cxd4 4.♗xd4 ♗f6 5.♗c3 e6 6.♗db5 ♖b4 [6...d5 7.♕f4 (7.cxd5 exd5 8.♗xd5 ♗xd5 9.♞xd5 ♖b4+ 10.♕d2 ♞e7♖) 7...e5 8.cxd5 exf4 9.dxc6 bxc6 10.♞xd8+ ♖xd8 11.♞d1+ ♕d7 12.♗d6 ♕xd6 13.♞xd6 ♖c7 14.♞d2=; 6...d6 7.♕f4 e5 8.♕g5±] 7.♕f4 d5?! [7...0-0 8.♕d6 ♕xd6 9.♗xd6 ♗e8 10.e3±] 8.♗c7+ ♖e7 9.♗xa8 d4 10.♕c7! [10.a3? ♕a5 11.b4 ♗xb4 12.axb4 ♖xb4-+] 10...dxc3 11.♕xd8+ ♞xd8 12.♞xd8+ ♖xd8 13.0-0-0 ♕d7 Despite being down two exchanges, Black has active piece play, since White's knight is trapped on a8 and White is behind in development. 14.bxc3 ♕xc3 15.♞d3! White has decided to activate his rook via the 3rd rank to attack Black's kingside. 15...♖b4 16.g4! After his longest think of the game, White decides he has to do something drastic to change its course. The text tempts Black into opening lines for White's rooks. 16...♗e4 17.♞g1 ♗xf2?! 18.♞f3 ♗e4 19.♞xf7 ♗d4 Black is planning ♕a3+ followed by ♕a4 and/or ♗d2 with all kinds of nasty threats against White's king. With the text, White offers to give back one exchange to quell Black's initiative. 20.♞g3! ♕d2+ 21.♖b2 ♗d6 22.♞xd7+! ♖xd7 23.♞d3 ♗xc4+ 24.♖b1 e5 25.♕g2 b5 26.a4 b4? [26...a6] 27.♕d5 ♗a3+ 28.♖a2 ♕c1 29.e3 ♗e6 30.♖b3+ ♖e7 31.♕xe6 ♖xe6 32.♗c7+- After spending almost the entire game on a8, the knight comes back with decisive results. 32...♖f7 33.♖b3 e4 34.♞d7+ ♖f6? 35.♞d1! ♕xe3 36.♗d5+ Check out the knight's route in this game -- g1-f3-d4-b5-c7-a8-naptime-c7-d5-e3!!! 1-0

West Chester Open

May 17-18, 2003

		Post Rating	Rd1	Rd2	Rd3	Rd4	Rd 5	Total
1	Rodion Rubenchik	2307	W20	W18	W4	W7	D2	4 ½
2	Peter Minear	2108	W24	W21	D9	W8	D1	4
3	Alisa Melekhina	1874	W11	W32	L7	W21	W9	4
4	Mel Ross	1818	W30	W22	L1	W14	W12	4
5	John Chernoff	2096	U	W26	W25	W16	D7	3 ½
6	Bob Hux	1913	W10	D29	H	D18	W17	3 ½
7	William Wong	1837	W28	W14	W3	L1	D5	3 ½
8	Peter Lang	1810	W26	D12	W13	L2	W18	3 ½
9	Ray Cintron	1803	W19	W23	D2	D12	L3	3
10	Babu Sundaresan	1630	L6	W33	L21	W35	W23	3
11	Richard Mesirov	1562	L3	W34	H	W13	D16	3
12	Lamont Rogers	1583	X	D8	W29	D9	L4	3
13	James Fisher	1592	W16	W17	L8	L11	W21	3
14	Richard Skinnell	1624	W36	L7	W32	L4	W24	3
15	Daniel Shaw	1393	L18	W36	H	D24	W22	3
16	Larry Dulany	1821	L13	W28	W23	L5	D11	2 ½
17	Michael Williams	1766	D31	L13	W30	W25	L6	2 ½
18	Gary Wellmaker	1738	W15	L1	W22	D6	L8	2 ½
19	Jim White	1594	L9	H	H	H	W31	2 ½
20	David Finizie	1582	L1	W37	H	W27	U	2 ½
21	Donald Anderson	1634	W27	L2	W10	L3	L13	2
22	Larry Donovan	1600	W35	L4	L18	W30	L15	2
23	Mark Chanel	1569	W33	L9	L16	W28	L10	2
24	Joe Casey	1572	L2	D27	W31	D15	L14	2
25	Tom Messineo	1532	H	W31	L5	L17	W27	2
26	Charles Jay	1458	L8	L5	W34	H	D30	2
27	Claude Banta	1427	L21	D24	W36	L20	D25	2
28	Alex Guziak	905	L7	L16	W33	L23	W35	2
29	Ronald Rogers	1709	W37	D6	L12	U	U	1 ½
30	Will Moyer	1500	L4	W35	L17	L22	D26	1 ½
31	Aaron Jones	1374	D17	L25	L24	W36	L19	1 ½
32	Roy Eikerenkoetter	1600	W34	L3	L14	U	U	1
33	Francis McDyer	944	L23	L10	L28	L34	W36	1
34	Steven Rapino	883	L32	L11	L26	W33	U	1
35	Michael Mullin	594	L22	L30	X	L10	L28	1
36	Albert Starnier	1603	L14	L15	L27	L31	L33	0
37	Willie Taylor	1193	L29	L20	F	U	U	0

U – Unplayed B – 1 Point Bye X – Forfeit Win Z – Forfeit Draw

H - ½ Point Bye F – Forfeit Loss

First Saturday Quad, April 5, 2003

Quad 1

		Post Rating	1	2	3	4	Total
1	Steven Matthews	1956	*	W	D	L	1 ½
2	Keith Thompson	1936	L	*	W	D	1 ½
3	Peter Moss	1913	D	L	*	W	1 ½
4	Steven Leverich	1905	W	D	L	*	1 ½

Quad 2

		Post Rating	1	2	3	4	Total
1	Larry Dulany	1870	*	D	W	W	2 ½
2	Henry Haynes	1863	D	*	D	W	2
3	Ray Cintron	1800	L	D	*	D	1
4	Mel Ross	1801	L	L	D	*	½

Quad 3

		Post Rating	1	2	3	4	Total
1	Gary Wellmaker	1747	*	W	W	D	2 ½
2	Ronald Rodgers	1720	L	*	W	W	2
3	Donald Anderson	1650	L	L	*	W	1
4	Bill Zebrowski	1775	D	L	L	*	½

Quad 4

		Post Rating	1	2	3	4	Total
1	Roy Eikerenkoetter	1652	*	W	W	D	2 ½
2	Albert Starner	1641	L	*	D	W	1 ½
3	Larry Donovan	1608	L	D	*	W	1 ½
4	Babu Sundaresan	1506	D	L	L	*	½

Quad 5

		Post Rating	1	2	3	4	Total
1	Joe Casey	1590	*	W	D	W	2 ½
2	Boris Michailenko	1493	L	*	D	W	1 ½
3	Lassaad Sanane	1455	D	D	*	D	1 ½
4	Will Moyer	1444	L	L	D	*	½

Quad 6

		Post Rating	1	2	3	4	Total
1	James Fisher	1503	*	W	D	W	2 ½
2	Tom Messineo	1458	L	*	D	W	1 ½
3	Charles Jay	1504	D	D	*	L	1
4	Nicholas Strauss	1415	L	L	W	*	1

Quad 7

		Post Rating	1	2	3	4	Total
1	Claude Banta	1400	*	W	W	W	3
2	Bob Staats	1211	L	*	W	D	1 ½
3	Ron Thoman	1324	L	L	*	W	1
4	Margaret Brakel	1120	L	D	L	*	½

First Saturday Quad, May 3, 2003

Quad 1

		Post Rating	1	2	3	4	Total
1	Kurt Schneider	2005	*	D	D	W	2
2	Peter Moss	1914	D	*	D	W	2
3	Keith Thompson	1933	D	D	*	D	1 ½
4	Mel Ross	1799	L	L	D	*	½

Quad 2

		Post Rating	1	2	3	4	Total
1	Albert Starner	1707	*	W	W	D	2 ½
2	Keith Johnson	1709	L	*	D	W	1 ½
3	Larry Dulany	1846	L	D	*	D	1
4	Gary Wellmaker	1732	D	L	D	*	1

Quad 3

		Post Rating	1	2	3	4	Total
1	Babu Sundaresan	1637	*	W	W	W	3
2	Joe Casey	1593	L	*	D	W	1 ½
3	Larry Donovan	1600	L	D	*	D	1
4	Roy Eikerenkoetter	1600	L	L	D	*	½

Quad 4

		Post Rating	1	2	3	4	Total
1	Will Moyer	1528	*	W	D	W	2 ½
2	Wilfred Saxe	1550	L	*	W	W	2
3	Boris Michailenko	1496	D	L	*	W	1 ½
4	Charles Jay	1460	L	L	L	*	0

Quad 5

		Post Rating	1	2	3	4	Total
1	Claude Banta	1399	*	W	D	W	2 ½
2	Rodney Bardwell	1312	L	*	W	W	2
3	Yugene Nasir Dey	1369	D	L	*	W	1 ½
4	Dana Cherry	924	L	L	L	*	0

Quad 6

		Post Rating	1	2	3	4	Total
1	Ron Thoman	1349	*	W	W	W	3
2	Margaret Brakel	1173	L	*	W	D	1 ½
3	Muhammed Maman	935	L	L	*	W	1
4	Irvin Coots	1036	L	D	L	*	½

Quad 7

		Post Rating	1	2	3	4	Total
1	Francis McDyer	959	*	W	W	W	3
2	Ernest Moore	894	L	*	W	W	2
3	Michael Mullin	608	L	L	*	W	1
4	Errol Manley	781	L	L	L	*	0

First Saturday Quad, June 7, 2003

(Edited. Club Member Results.)

Quad 2

		Post Rating	1	2	3	4	Total
1	Mel Ross	1838	*	L	W	W	2
2	Marvin Wilson	1831	W	*	L	D	1 ½
3	Ray Cintron	1830	L	W	*	D	1 ½
4	Tom Clauson	1863	L	D	D	*	1

Quad 3

		Post Rating	1	2	3	4	Total
1	Gary Wellmaker	1756	*	D	W	W	2 ½
2	Sang Kim	1701	D	*	W	D	2
3	Roy Eikerenkoetter	1675	L	L	*	W	1
4	Barry Stoner	1599	L	D	L	*	½

Quad 4

		Post Rating	1	2	3	4	Total
1	Brad Thomas	1602	*	W	L	W	2
2	Babu Sundaresan	1587	L	*	D	W	1 ½
3	Charles Jay	1464	W	D	*	L	1 ½
4	Will Saxe	1534	L	L	W	*	1

Swiss

		Post Rating	1	2	3	Total
1	Margaret Brakel	1130	W6	L3	W2	2
2	Kevin Pytel	1107	W5	W4	L1	2
3	Irvin Coots	1054	L4	W1	W5	2
4	Carl Copeland	1093	W3	L2	W6	2
5	John Pytel	694	L2	W6	L3	1
6	Mark Mast-Wang	309	L1	L5	L4	0

Holly Heisman Memorial

This event is a 5SS G/30 and will be held at the Kaiserman Jewish Community Center (KJCC) in Wynnewood, PA, 3 miles south on US1 (City Line Avenue) from the site of the World Open, the Adam's Mark Hotel. Travel US1 to McDonald's (on left; 7-11 on upper right) and make a right onto Haverford Avenue. First right driveway is the KCCC; park in the back.

No entry fee, but a suggested donation of \$15.00 is appreciated. Reg. 9:15-10:00. All: 5SS, G/30 Rds 10:30-11:45-1:15-2:30-3:45. Hotel Information: Summit Inn Hotel, 351 E. Township Line Rd. (US 1) - Upper Darby PA 19082; 610-449-6000.

A trophy to the club with the most participants, Under 1400 section trophies, House of Staunton Black/Natural lacquered ProLine Series chess set for the Upset Prize, and lots of other prizes available.

Two Sections: Open and U1400 Ent: E-mail, phone/e-mail, USCF name/ID/exp, section, club to: Dan Heisman 1359 Garden Rd. Wynnewood, PA 19096. 610-649-0750.

The Holly Heisman Memorial Fund provides funds to benefit women in need, especially battered women, women with breast cancer, or runaway teenagers. It has awarded grants to: The Child Abuse Prevention Effort, Del. Co. Women Against Rape, Living Beyond Breast Cancer, & The Domestic Violence Center of Chester Co.

THE WEST CHESSER
RANK AND FILE NEWSLETTER
904 Sage Road
West Chester, PA 19382