



The West Chesser



Rank and File Newsletter

Official Newsletter of the West Chester Chess Club

Wednesdays 7-11pm
United Methodist Church
129 South High Street
West Chester, PA

Volume XXVIII, Number 2

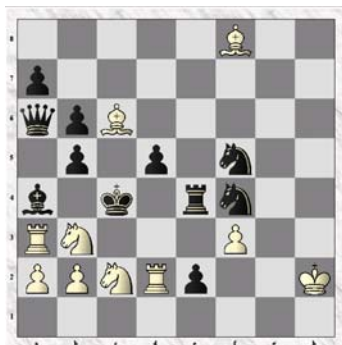
Summer 2002

Donald Anderson, Editor

WCCC Schedule

Date(s)	Event (Director)
July 17, 24, 31	Summer Swiss 3 (Upleger)
Aug. 7	Summer Swiss 3 (Upleger)
Aug. 14, 21, 28	Summer Swiss 4 (Larsen)
Sep. 4	Summer Swiss 4 (Larsen)
Sep. 11, 18, 25	Fall Swiss (White)
Oct. 2	Fall Swiss (White)
Oct. 9, 16, 23, 30	Haendiges Memorial (Bolig)
Nov. 6, 13, 20, 27	November Swiss (Eikerenkoetter)
Dec. 4, 11, 18	December Swiss (Larsen)

White to Mate in 3



Answer on page 2.

Temporary Homes for Events

The United Methodist Church is remodeling and our temporary playing location on Wednesday nights is on Barnard Street. You will find us at the building right next to the 7-11. It is the old home of McDermott's Fitness Center (If you look closely you can still see the outline of the old McDermott's sign on the building). It is just diagonal from the United Methodist Church. The Church has their offices there. So it looks like an office from the street. The big tips that you're at the right spot are the two double glass entry doors and the ugly green carpet on the floor. Just go straight back, then to the right past some cubicles and you'll find us.

For the First Saturday Quads we are meeting at the Holy Trinity Episcopal Church. That church is on High Street. Walk down, south, on the same side of the street as the 7-11 and it's at that end of the block. Turn right down Union Street, go behind the back of the church, and enter the glass door. Walk down the main corridor until you enter a large auditorium. That'll be us there having some chess fun!

2002 Quad Directors

July 13 th	Donald Anderson
August 3 rd	Greg Shaffer
September 7 th	Roy Eikerenkoetter
October 5 th	Jim Larsen
November 2 nd	Dave Bolig
December 7 th	Rob Upleger

The WCCC Wednesday Night TD's for 2001

Don Anderson	(610) 578-2051	dranders@us.ibm.com
Dave Bolig	(610) 323-5539	dbolig@msn.com
Roy Eikerenkoetter	(610) 627-1106	Roi2e7@aol.com
Greg Shaffer	(610) 284-2072	greg@shaffer.net
Rob Upleger	(610) 873-9374	robu@chesco.com
Jim White	(610) 269-7639	ChessJimW@aol.com

WCCC Officers

Keith Johnson, President
 Jim White, Chief TD
 Rob Upleger, Secretary
 Jim White, Treasure

White to Mate in 3

Front Page

Answer: 1.♖d4 ♖d4 2.♗d2 ♖d2 3.♖c3# 1-0

Page 3

Answer: 1.♗a5 ♖a5 2.♖c3 bc3 3.♗a3#

Your Moves

This section of *The West Chesser* showcases games played by our members. All members are encouraged to submit *any* game or combination they have played, with or without commentary. The games need not be from club events.

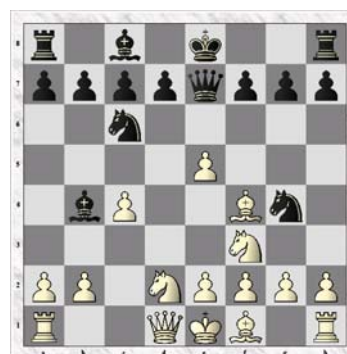
White: **Nolan, Greg (2121)**

Black: **Ross, Mel (1786)**

Event: 1st Saturday Quad (Submitted by Nolan)

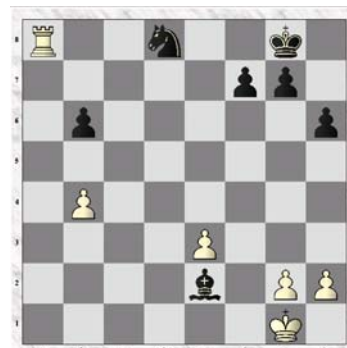
Date: May 4, 2002

1.d4 A52:Budapest Gambit 1...♗f6 2.c4 e5 3.d×e5 ♗g4 4.♗f4 ♗c6 5.♗f3 ♖b4+ 6.♗bd2 ♖e7 (See diagram)



7.a3 ♗×d2+ 8.♖×d2 ♗g×e5 9.♗×e5 ♗×e5 10.e3 d6 11.♗e2 0-0 12.♖c1 b6 13.0-0 ♖b7 14.♖fd1 a5 15.b4 a×b4 16.a×b4 ♖fd8 17.♖c3 h6 18.c5 ♗g6 19.c×d6 c×d6 Opening the c-file gets White a lot of play 20.♗g3 ♖ac8 21.♖d4 ♖×c1 22.♖×c1 ♖e4

Threatening mate ♖×g2 23.♖×e4 ♗×e4 24.f3 ♗a8 25.♖c7 ♗f8 26.♖a7 ♗e6 27.♗×d6 ♗×f3 Demolishes the pawn shield 28.Be7 ♗×e2? 29.♗×d8 ♗×d8 30.♖a8 (see diagram)

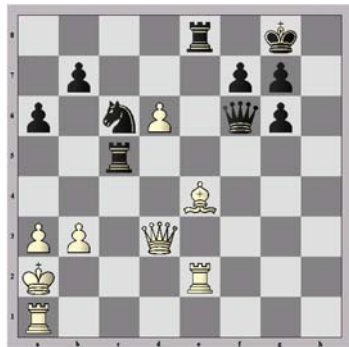


30..♖f8 31.♖×d8+ ♖e7 32.♖b8 b5 33.♖f2 ♗c4 34.e4 ♖f6 35.♖e3 ♖e5 36.♖e8+ ♗e6 37.h4 h5 38.♖g8 g6 39.♖b8 ♗c4 40.♖c8 ♗f1 41.g3 ♗c4 42.♖c5+ ♖f6 43.♖f4 ♗e2

44.♖c6+ ♖e7 45.♖e5 ♖d7 46.♖d5 ♗f1 47.♖b6 ♖c7 48.♖c5 ♗d3 49.e5 ♗c4 50.♖×b5 Black resigns 1-0

White: Jay, Charles (1431)
 Black: Clauson, Tom (1922)
 Event: NA
 Date: 2002

1.c4 A17: English Opening 1...d6 2.d3 e6 3.f3 d5 4.cxd5 exd5 5.e3 d7 6.d2 0-0 7.0-0 c5 8.d4 d6 9.f1 a6 10.b3 cxd4 11.exd4 f5 12.a3 c7 13.h4 g6 14.dxg6 hxg6 15.f3 ad8 16.g5 e4 17.dxd5 exd5 18.fxe7 dxe7 19.fxe4 h5 20.d5? f2+ 21.f1 e8 22.d6 d6 23.d3? h1+?! [23...fxe4! 24.fxe4 (24.fxe4 e5 25.fxe5 dxe5 26.fac1 d3 27.f8+ h7 28.fcc8 Threatening fh8#) 24...h1+ 25.f2 fxa1] 24.f2 f2+ 25.f2 f2+ 26.f2 f4+ 27.f2 c5+ [27...fxe4 28.fxe4 f2+ 29.f2 c5+ 30.f4 d4+ 31.f3 db5+ 32.f2 f5+ 33.f2 b2 fx4 34.bxc4 ff6+ 35.f2 a2 dc3+ 36.f2 b3] 28.f2 ff6+ 29.f2 a2 (See diagram)



29...f3?? Gives White new chances [29...fa5 secures the point Threatening ..db4# 30.d7 30...fd8? [30...fe6 31.f2 d8] 31.fxc6 fxc6 32.f8+!



32...fh7?? leading to a quick end (See diagram). 33.fxc3!! Eliminates the defender c3 33...Qg2+ [33...fc3 Deflects the Black Queen from the a8-h1 diagonal so as 34.fh1+ with a beautiful mate combination] 34.f2 b2 fxb2+ 35.fxb2

Black resigns 1-0

White: Anderson, Donald (1591)
 Black: Donovan, Larry (1702)
 Event: 1st Saturday Quads
 Date: May 4, 2002

1.e4 C05: French Defense 1...e6 2.d4 d5 3.d2 d6 4.f3 c5 5.c3 d6 6.f3 dx4 7.dxe4 8.fxe4 c7 9.0-0 cxd4 10.cxd4 d6 11.f1 0-0 12.fxh7+ fh8?? a transit from better to worse [12...fxh7 13.fg5+ fg6 14.f3+ f5] 13.f4 g6 14.b3 f5 15.fxc6 fxc6 16.f3 fd7 17.f2 fg8 18.d5 fh7 19.fg5+ fg8 20.f4 e5 21.fxe5 fg7 (see diagram)



22.fh4 fxe5
 23.fxe5 fe8
 24.fxg7 fxg7
 25.fh7+ fh6
 26.f7+ fxg5
 27.fxe8
 Black resigns 1-0

White to Mate in 3



Answer on page 2.

Spring Swiss 1

May 8, 2002

		Post Rating	Rd1	Rd2	Rd3	Rd4	Total
1	Donald Anderson	1560	W3	D4	W8	L2	2 ½
2	Keith Johnson	1742	U	U	W6	W1	2
3	Roy Eikerenkoetter	1662	L1	W7	W4	L6	2
4	Charles Jay	1432	W7	D1	L3	L9	1 ½
5	Herbert Manarang	1390	H	W8	U	U	1 ½
6	Mel Ross	1709	U	U	L2	W3	1
7	Tony Bowden	1583	L4	L3	W9	U	1
8	Margaret Brakel	1007	B	L5	L1	U	1
9	John Van Der Does	1505	U	U	L7	W4	1

U – Unplayed B – 1 Point Bye H – ½ Point Bye

First Saturday Quad, April 6, 2002

(Edited. Club Member Results.)

Quad 2

		Post Rating	1	2	3	4	Total
1	Henry Haynes	1816	*	W	W	D	2 ½
2	Mel Ross	1767	L	*	W	D	1 ½
3	Steve Pavolic	1745	L	L	*	W	1
4	Larry Dulany	1743	D	D	L	*	½

Quad 3

		Post Rating	1	2	3	4	Total
1	Kenneth Milutin	1736	*	W	W	D	2 ½
2	Caitlin Coslett	1697	L	*	W	W	2
3	Greg Pratt	1727	L	L	*	X	1
4	Eric Brandt	1719	D	L	F	*	½

F – Forfeit Loss X – Forfeit Win

Quad 4

		Post Rating	1	2	3	4	Total
1	Dorian Shevitz	1610	*	W	L	W	2
2	Jim White	1571	L	*	W	W	2
3	Charles Jay	1431	W	L	*	D	1 ½
4	Boris Michailenko	1600	L	L	D	*	½

Quad 5

		Post Rating	1	2	3	4	Total
1	Andrew Wagner	1211	*	L	W	W	2
2	Ron Thoman	1360	W	*	D	L	1 ½
3	James Skweres	1349	L	D	*	W	1 ½
4	Robert Staats	1182	L	W	L	*	1

Quad 6

		Post Rating	1	2	3	4	Total
1	Daniel Brenneman	1114	*	L	W	W	2
2	Margaret Brakel	1021	W	*	L	W	2
3	Robert Fisette	1092	L	W	*	W	2
4	Christos Stavrou	657	L	L	L	*	0

First Saturday Quad, May 4, 2002**(Edited. Club Member Results.)****Quad 1**

		Post Rating	1	2	3	4	Total
1	Gregory Nolan	2129	*	W	W	W	3
2	Joe Mucerino	1956	L	*	D	W	1 ½
3	Lewis Hucks	1909	L	D	*	W	1 ½
4	Mel Ross	1710	L	L	L	*	0

Quad 3

		Post Rating	1	2	3	4	Total
1	Joe Casey	1663	*	W	W	W	3
2	Albert Starner	1618	L	*	W	W	2
3	Donald Anderson	1551	L	L	*	W	1
4	Larry Donovan	1609	L	L	L	*	0

Quad 4

		Post Rating	1	2	3	4	Total
1	Pat Flynn	1527	*	W	D	W	2 ½
2	Ron Thoman	1414	L	*	W	W	2
3	Charles Jay	1420	D	L	*	W	1 ½
4	Willard Moyer	1458	L	L	L	*	0

First Saturday Quad, June 1, 2002**(Edited. Club Member Results.)****Quad 2**

		Post Rating	1	2	3	4	Total
1	Jim Larsen	1825	*	D	W	W	2 ½
2	Mel Ross	1716	D	*	W	L	1 ½
3	Steve Pavolic	1763	L	L	*	W	1
4	Gary Wellmaker	1705	L	W	L	*	1

Quad 4

		Post Rating	1	2	3	4	Total
1	Winsor Schmidt	1706	*	W	L	W	2
2	Dorian Shevitz	1631	L	*	W	W	2
3	Roy Eikerenkoetter	1645	W	L	*	L	1
4	Larry Donovan	1600	L	L	W	*	1

Swiss

		Post Rating	Rd1	Rd2	Rd3	Total
1	Nicholas Strauss	1395	D4	W6	W3	2 ½
2	Wilfred Saxe	1502	L3	W4	W5	2
3	James Skweres	1392	W2	W5	L1	2
4	Charles Jay	1421	D1	L2	W6	1 ½
5	Ron Thoman	1368	D6	L3	L2	½
6	Robert Staats	1149	D5	L1	L4	½

Chester County Open March 16, 2002

Swiss

		Post Rating	Rd1	Rd2	Rd3	Rd4	Rd5	Total
1	Rodion Rubenchik	2342	W12	W8	W3	W9	D4	4 ½
2	Jim Larsen	1809	W20	W15	H	D3	W8	4
3	William Atkinson	2194	W10	W5	L1	D2	W9	3 ½
4	Bob Jones	2006	W13	D7	H	W11	D1	3 ½
5	Alisa Melekhina	1765	W19	L3	W14	D6	W11	3 ½
6	Joe Mucerino	1959	W14	L9	W12	D5	D7	3
7	Steve Pavolic	1755	W16	D4	L9	W12	D6	3
8	Larry Dulany	1746	W18	L1	W10	W15	L2	3
9	Thom Gregory	1729	W17	W6	W7	L1	L3	3
10	Joe Casey	1590	L3	W16	L8	W14	W13	3
11	Mel Ross	1725	L15	W20	W13	L4	L5	2
12	Albert Starner	1602	L1	W18	L6	L7	W15	2
13	Jim White	1566	L4	W17	L11	W16	L10	2
14	Charles Jay	1411	L6	W19	L5	L10	W18	2
15	Jake De Laurier	1442	W11	L2	W18	L8	L12	2
16	Omar Lucas	1072	L7	L10	W20	L13	W19	2
17	John Sayers	1237	L9	L13	W19	L18	W20	2
18	Ajene Livingston	1356	L8	L12	L15	W17	L14	1
19	Dayne DeHaven	755	L5	L14	L17	W20	L16	1
20	Willie Taylor	1201	L2	L11	L16	L19	L17	0

H – ½ Point Bye

THE WEST CHESSER
 RANK AND FILE NEWSLETTER
 904 Sage Road
 West Chester, PA 19382