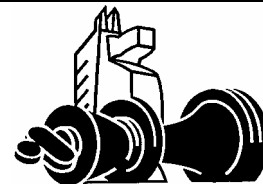


The West Chesser



Rank and File Newsletter

Official Newsletter of the West Chester Chess Club

Wednesdays 7-11pm
United Methodist Church
129 South High Street
West Chester, PA

Volume XXIX, Number 2

Spring 2003

Donald Anderson, Editor

WCCC Schedule

Date(s)	Event (Director)
Apr 2, 9, 16, 23	Dollar Swiss I (Anderson)
May 3	1 st Saturday Quad (White)
Apr 30, May 7, 14	Spring Swiss I (Anderson)
May 17, 18	West Chester Open (White)
May 24, 28, Jun 4	Summer Swiss II (Eikerenkoetter)
June 7	1 st Saturday Quad (White)
Jun 11, 18, 25 & July 2	Summer Swiss I (Anderson)
July 12*	1 st Saturday Quad (White)
July 9, 16, 23, 30	Summer Swiss II (Eikerenkoetter)

* World Open weekend necessitates moving the Quads from July 5 to the following weekend.

White to Mate in 3



Answer on page 2.

Welcome New Members

The West Chester Chess Club welcomes four new members; Claude Banta, Lassaad Sanane, Oliver Yang, and Babu Sundaresan. All are fully involved and participating in the 1st Saturday Quads.

Thank you for joining and spread the word about the Club. We welcome everyone.

West Chester Open

The West Chester Open will be at the Holiday Inn (High St & Route 202 Bypass) in West Chester this year the weekend of May 17-18. This event draws players from Virginia to New Jersey. These open events, unlike the 1st Saturday Quads, gives you an opportunity to test your chess skill against a wider skill level of players (particularly in the earlier rounds when the top and bottom half of the rankings play each other). But there are prizes for every class. The lowest class is U1400. So, participate!

Registration is between 8:45 and 9:15 am with play starting at 9:30 (see Chess Life for the full details). There are a total of 5 rounds. See Jim White for registration. Entry fee is \$35 if received before May 10, else its \$45. \$100 is the class prize.

WCCC Officers

Keith Johnson, President
 Jim White, Chief TD
 Rob Upleger, Secretary
 Jim White, Treasure

White to Mate in 3

Front Page

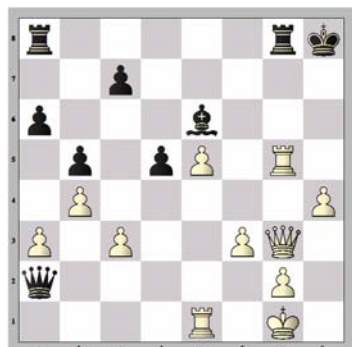
Answer: 1. ♖f6+ ♗xf6 2. ♜d5+ ♘e6 3. ♜xe6#

Your Moves

This section of *The West Chesser* showcases games played by our members. All members are encouraged to submit *any* game or combination they have played, with or without commentary. The games need not be from club events.

White: Margaret Brakel (958)
 Black: Charles Jay (1421)
 Event: Haendiges Memorial
 Date: October, 2003

1.e4 e6 2.d4 d6 3.♖f3 ♗f6 4.♗c3 ♘e7 5.♙e2 b6
 6.e5 ♗fd7 7.♙e3 ♙b7 8.0-0 a6 9.♜d2 b5 10.a3 0-0
 11.♙g5 d5 12.♙xe7 ♜xe7 13.b4 ♗c6 14.♞fc1 f5
 15.♙f1 ♞fc8 16.♗a2 ♗d8 17.c3 ♗f7 18.h4 ♗h6
 19.♙e2 ♞f8 20.♜g5 ♜f7 21.♗h2 ♗g4 22.♙xg4
 fxg4 23.♗xg4 ♗h8 24.♞e2 h6 25.♗xh6 gxh6
 26.♜xh6+ ♜h7 27.♜xe6 ♗b6 28.♜g4 ♞g8 29.♜h3
 ♙c8 30.♜h2 ♙g4 31.♞e3 ♗c4 32.♞g3 ♗xe5??
 33.dxe5 ♜c2 34.f3 ♙e6 35.♞g5 ♜b2 36.♞e1 ♜xa2



37. ♜g3 ♜xa3??
 (see diagram)
 38. ♞h5# 1-0

White: Mel Ross (1757)
 Black: Donald Anderson (1637)
 Event: Haendiges Memorial
 Date: October, 2002

1.e4 e5 2.♗f3 ♗c6 3.d4 exd4 4.♗xd4 ♙c5 5.♙e3
 ♜f6 6.c3 ♗ge7 7.♙b5 0-0 [7...♜g6?! 8.0-0 ♜xe4
 9.♗xc6 dxc6 10.♙xc5 cxb5?? 11.♞e1] 8.0-0 ♜e5
 9.♜a4 a6 10.♗d2 ♙a7 11.♙e2 d6 12.♗2f3? ♜xe4
 13.♞ad1 ♙d7 14.♜b3 b5 15.♙d3 ♜g4 16.h3 ♜h5
 17.♙e2 ♜g6 18.♙d3 ♜h5 Draw agreed. ½-½

White: Donald Anderson (1622)
 Black: Charles Jay (1453)
 Event: Club Championship
 Date: March 12, 2003

1.e4 e5 2.♗f3 d6 3.♙e2 [3.d4 exd4 4.♗xd4] 3...♗f6
 4.♗c3 ♗c6 5.h3 ♙e7 6.d3 [6.d4] 6...h6 7.♙d2
 [7.♙e3 d5 8.♗xd5 ♗xd5 9.exd5 ♜xd5] 7...♙e6
 8.♜c1 a6 9.0-0 0-0 10.♞d1 d5 11.a3?! [11.♗xd5
 ♗xd5 12.exd5 ♙xd5] 11...d4! 12.♗b1 ♜d7 13.♗h2
 ♙d6 14.♗g1 ♗e7 15.♗h1 c5 16.♙f3 ♗g6 17.♙e1
 ♗h4 18.♗d2 g5 19.♙e2 g4 20.♗c4 ♗h7 21.♗b6
 ♜c6 22.♗xa8 gxh3! 23.g3 ♗xe4! 24.dxe4 ♜xe4+
 25.f3 ♜g6 26.♙d3 e4 [26...f5 27.♗b6 e4 28.♙f1
 ♙xg3 29.♙xh3 ♙xe1 30.♞e1 f4 31.♙f1] 27.♙xe4 f5
 28.♙xb7 ♙xg3 29.♜d2 [29.♞d2 f4 30.♗c7 ♙f5
 31.♞e2 h2 32.♞xh2 ♙xh2 33.♙xh4 ♙g3 4.78/10]
 29...♙f4 30.♜e2 ♙c4 [30...♜g2+] 31.♞d3 [31.♗xh3]
 31...♞e8 [31...♜g2+] 32.♜f1 [32.♗xh3 ♞xe2
 33.♗xf4 ♜g5 34.♞d2 ♜xf4 35.♞xe2] 32...♜g2+
 33.♜xg2 hxg2# 0-1 (see diagram)



Classic Games

This section of *The West Chess* showcases classic games of the masters. It is hoped that these gems will be of help you in improving your game. Here is another King's Indian Defense (Classical System) opening. It is a sharp opening with many tactical chances and surprise blows available to both sides.

White: **Tal, Mikhail (2640)**

Black: **Fischer, Robert (2780)**

Event: Candidates Tournament, Zagrab

Date: 1959

1.d4 ♘f6 2.c4 g6 3.♗c3 ♘g7 4.e4 d6 5.♙e2 0-0
6.♗f3 e5 7.d5 ♗bd7 8.♙g5 h6 9.♙h4 a6 10.0-0
♙e8 11.♗d2 ♗h7 12.b4 ♙f6 13.♙xf6 ♗hxf6N
14.♗b3 White prepares the advance c5 14...♙e7
15.♙d2 ♗h7 16.♙e3 White prepares c5 16...♗g8
17.c5 f5 18.exf5 gxf5 19.f4 exf4 20.♙xf4 White
gets kings attack. 20...dxc5 21.♙d3!? Increasing
the pressure on the isolated pawn on f5
21...cxb4?! [21...♙g7! Black hits the c3-Knight and
gets the Queen out of the line of fire and prepares
to bring the g8-Knight into useful service. 22.♙xf5+
♗h8 23.♗e4 c4! 24.♗bd2 ♗b6 25.♗g3 ♗e7
26.♗h5 ♙xf5 27.♗xg7 ♙xf4 28.♙xf4 ♗xg7] 22.♙ae1
♙f6?! 23.♙e6 ♙xc3 24.♙xf5+ White gets strong
play along the open f-file 24...♙xf5! 25.♙xf5+ ♗h8
26.♙f3 ♙b2 [26...♙g7? 27.♙g3 ♙h7 28.♙e8]
27.♙e8 Plans Rg3 27...♗df6+- [27...♙g7 28.♙g3!
♗b6 29.♙xg7 ♙xf5 30.♙gxg8+ ♗h7 31.♙xa8 ♗xa8
32.♙xa8+-] 28.♙xf6+! [28.♙xc8 ♙xc8 29.♙xc8
♗xd5 30.♙xb7 ♙b1+ 31.♙f1 ♙d3±] 28...♙xf6
29.♙xf6 ♗g7 30.♙ff8 ♗e7 31.♗a5...(see diagram)



[31.♙xe7+?! ♗xf8
32.♙xc7 a5±] 31...h5
32.h4 [32.♙xe7+?!
♗xf8 33.♙xc7 ♙f5
34.♗xb7 ♙c8±]
32...♙b8 [32...b3
33.axb3 (33.♗xb3
a5+-) 33...♗xd5
34.♗c4+-] 33.♗c4
[33.♙xe7+?! ♗xf8

34.♙xc7 ♙g4±] 33...b5 [33...♗xd5 34.♗e5!
(34.♙xc8?! ♙xc8 35.♙xc8 ♗f6+-) 34...♙e6
35.♙xb8+-] 34.♗e5 1-0

The Master's Corner



Pennsylvania State Champ and FIDE Master Rodion Rubenchick demonstrates his chess talents in this issue in this newsletter with a game from the Pennsylvania State Championships.

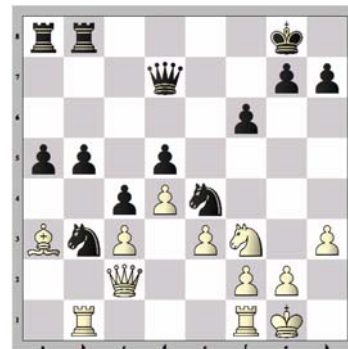
White: **Pugh, Larry (2017)**

Black: **Rubenchick, Rodian (2346)**

Event: [E28] PA State Championships, Camp Hill, PA

Date: September 28, 2002

1.d4 ♗f6 2.c4 e6 3.♗c3 ♙b4 4.a3 ♙xc3+ 5.bxc3
c5 6.e3 0-0 7.♙d3 b6 8.♗f3?! White's best way to
play for an advantage in this variation is to put the
knight on e2, followed by k-side castling and
advancing the e and f pawns. 8...♙b7 9.♙c2 d5!
Despite undoubling the c-pawns, this prevents
White from playing e4. 10.0-0 ♗c6 11.♙b1 ♗a5
12.cxd5 c4! 13.♙e2 exd5 ♙ Black's advantage is
obvious here. He has prevented White from
liberating his dark-squared bishop, controls e4 and
b3 (where the knights will soon go), and has the
standard plan of advancing his q-side pawn
majority. It is much harder to recommend anything
constructive for White. 14.a4 ♙d6 15.♗e5 ♙fe8
16.♙d2 ♗e4! Initially Black was planning on
16...Nd7 to trade off White's best piece. However,
then White could muddy the waters by 17. Nxf7!
Kxf7 18. Qxh7 with unclear consequences. With
the text, Black plans simply ...f6, followed by
doubling the rooks on the e-file. 17.♙g4 f6 18.♗f3
♗b3 19.♙c1 ♙c6 20.♙b2 ♙xa4+- 21.♙e2 ♙d7
22.♙xd7 ♙xd7 23.h3 a5 24.♙c2 b5 25.♙a3 ♙eb8



Perhaps resignation is a bit premature here, but White's position is truly depressing. 0-1 (see diagram)

First Saturday Quad, January 4, 2003

(Edited. Club Member Results.)

Quad 2

		Post Rating	1	2	3	4	Total
1	Mel Ross	1832	*	W	W	W	3
2	Steve Pavolic	1782	L	*	D	W	1 ½
3	Greg Pratt	1703	L	D	*	W	1 ½
4	Gary Wellmaker	1700	L	L	L	*	0

Quad 3

		Post Rating	1	2	3	4	Total
1	Roy Eikerenkoetter	1656	*	W	D	W	2 ½
2	Joe Casey	1609	L	*	W	W	2
3	Larry Donovan	1600	D	L	*	W	1 ½
4	Will Moyer	1400	L	L	L	*	0

Quad 4

		Post Rating	1	2	3	4	Total
1	Charles Jay	1438	*	D	D	W	2
2	Guy Thomas	1351	D	*	L	W	1 ½
3	Max Blumenthal	1066	D	W	*	L	1 ½
4	Jarey Wang	1149	L	L	W	*	1

First Saturday Quad, February 1, 2003

(Edited. Club Member Results.)

Quad 3

		Post Rating	1	2	3	4	Total
1	Mel Ross	1837	*	W	W	W	3
2	William Wong	1775	L	*	L	W	1
3	Greg Pratt	1696	L	W	*	L	1
4	Gary Wellmaker	1700	L	L	W	*	1

Quad 4

		Post Rating	1	2	3	4	Total
1	Donald Anderson	1683	*	W	W	W	3
2	Roy Eikerenkoetter	1648	L	*	L	W	1
3	Larry Donovan	1600	L	W	*	L	1
4	Joseph Casey	1548	L	L	W	*	1

Quad 5

		Post Rating	1	2	3	4	Total
1	John Crompton	1588	*	W	W	W	3
2	Will Moyer	1473	L	*	W	W	2
3	Lassaad Sanane	1490	L	L	*	D	½
4	Charles Jay	1389	L	L	D	*	½

Quad 6

		Post Rating	1	2	3	4	Total
1	David Cassel	1378	*	W	W	D	2 ½
2	Daniel Shaw	1246	L	*	W	W	2
3	Ron Thoman	1314	L	L	*	W	1
4	Joe Demetrick	1288	D	L	L	*	½

Quad 7

		Post Rating	1	2	3	4	Total
1	John Husted-Sherm	1106	*	W	W	W	3
2	Margaret Brakel	1122	L	*	W	W	2
3	Alex Husted-Sherm	652	L	L	*	D	½
4	George Lahm	667	L	L	D	*	½

First Saturday Quad, March 1, 2003**(Edited. Club Member Results.)****Quad 2**

		Post Rating	1	2	3	4	Total
1	Anand Mishra	1894	*	D	W	W	2 ½
2	Larry Dulany	1848	D	*	W	D	2
3	Henry Haynes	1855	L	L	*	W	1
4	Mel Ross	1817	L	D	L	*	½

Quad 3

		Post Rating	1	2	3	4	Total
1	Ronald Rodgers	1704	*	W	D	W	2 ½
2	Douglas Schwetke	1690	L	*	W	W	2
3	Gary Wellmaker	1700	D	L	*	D	1
4	Greg Pratt	1657	L	L	D	*	½

Quad 4

		Post Rating	1	2	3	4	Total
1	Roy Eikerenkoetter	1664	*	W	W	W	3
2	Joe Casey	1567	L	*	W	W	2
3	Larry Donovan	1600	L	L	*	W	1
4	Willard Moyer	1447	L	L	L	*	0

Quad 5

		Post Rating	1	2	3	4	Total
1	Nicholas Strauss	1424	*	L	W	W	2
2	Ron Thoman	1361	W	*	D	D	2
3	Steven Rolfe	1396	L	D	*	W	1 ½
4	Charles Jay	1352	L	D	L	*	½

Quad 6

		Post Rating	1	2	3	4	Total
1	Claude Banta	1319	*	D	W	W	2 ½
2	Robert Staats	1253	D	*	W	W	2 ½
3	Dominic D'Angelo	852	L	L	*	W	1
4	Kevin Thomas	911	L	L	L	*	0

THE WEST CHESSER
RANK AND FILE NEWSLETTER
 904 Sage Road
 West Chester, PA 19382