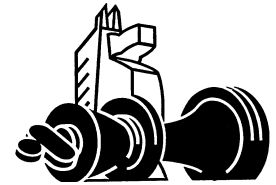


The West Chesser



Rank and File Newsletter

Official Newsletter of the West Chester Chess Club

Wednesdays 7-11pm
United Methodist Church
129 South High Street
West Chester, PA

Volume XXVIII, Number 1

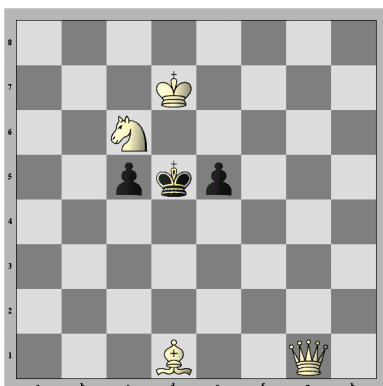
Spring 2002

Donald Anderson, Editor

WCCC Schedule

| Date(s) | Event (<i>Director</i>) |
|-----------------|---------------------------------|
| Mar. 20, 27 | Spring Swiss 1 (Eikerenkoetter) |
| Apr. 3, 10 | Spring Swiss 1 (Eikerenkoetter) |
| Apr. 17 | Club Champion Lecture |
| Apr. 24 | Spring Swiss 2 (Bolig) |
| May 1, 8, 15 | Spring Swiss 2 (Bolig) |
| May 22, 29 | Summer Swiss 1 (Shaffer) |
| June 5, 12 | Summer Swiss 1 (Shaffer) |
| June 19, 26 | Summer Swiss 2 (Anderson) |
| July 3, 10 | Summer Swiss 2 (Anderson) |
| July 17, 24, 31 | Summer Swiss 3 (Upleger) |
| Aug. 7 | Summer Swiss 3 (Upleger) |

White to Mate in 2



Answer on page 2.

2002 Officers Elected

The annual club elections were held on December 5th. Keith Johnson is the Club's new President. Jim White is the new Treasurer and retains the position of Chief Tournament Director. Rob Upleger is returning as Secretary. I have resumed the position of newsletter editor, which I last held in 1996.

This year will be a challenging one. Attendance at the club needs to improve. The United Methodist Church is remodeling and we will have to seek a temporary playing location. So, any help, or suggestions, on programs, events or a new playing location would be greatly appreciated.



Membership Dues Notice

Its that time of the year. However, now more than ever as we face some uncertainty about where we will be playing, that we need 100% collection of club dues. As of June, we will have to vacate the church and seek a home elsewhere. That may involve an increase in rent. So, please get your dues in to Jim White. That's \$12 for an annual membership. Bring it by the church or send an email to Jim White, ChessJimW@aol.com to get his address to mail it in.



2002 Quad Directors

| | |
|---------------------------|--------------------|
| April 6 th | Roy Eikerenkoetter |
| May 4 th | Dave Bolig |
| June 1 st | Rob Upleger |
| July 13 th | Don Anderson |
| August 3 rd | Greg Shaffer |
| September 7 th | Roy Eikerenkoetter |
| October 5 th | Jim Larsen |
| November 2 nd | Dave Bolig |
| December 7 th | Rob Upleger |

The WCCC Wednesday Night TD's for 2001

| | | |
|--------------------|----------------|---------------------|
| Don Anderson | (610) 578-2051 | dranders@us.ibm.com |
| Dave Bolig | (610) 323-5539 | dbolig@msn.com |
| Roy Eikerenkoetter | (610) 627-1106 | Roi2e7@aol.com |
| Greg Shaffer | (610) 284-2072 | greg@shaffer.net |
| Rob Upleger | (610) 873-9374 | robu@chesco.com |
| Jim White | (610) 269-7639 | ChessJimW@aol.com |

WCCC Officers

Keith Johnson, President
 Jim White, Chief TD
 Rob Upleger, Secretary
 Jim White, Treasure

White to Mate in 2

Front Page

Answer: 1. ♖g3!

Back Page

Answer: 1. ♖e5

Your Moves

This section of *The West Chess* showcases games played by our members. All members are encouraged to submit *any* game or combination they have played, with or without commentary. The games need not be from club events.

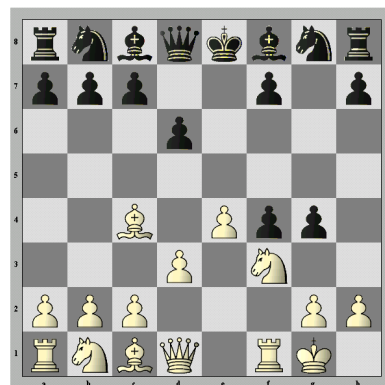
White: **Bhame, Tom**

Black: **Merickel, Jim**

Event:

Date: January 5, 2000

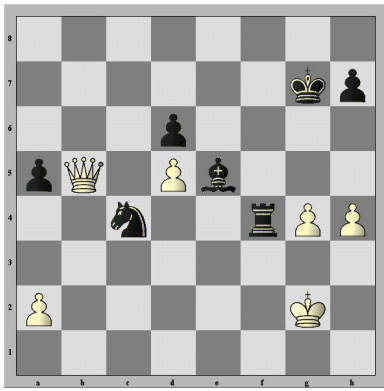
1.e4 e5 2.f4 exf4 3.♟f3 d6 4.♝c4 g5 5.O-O g4 6.d3 *Transposing to a Muzio Gambit. This gambit is theoretically unsound but difficult to meet over the board. (see Diagram)*



6... ♗h6!/?!
Dropping over 2 points in computer terms turned out to be worth it.
 7.♟d4 ♜f6 8.c3
(Much stronger for accurate play is
 8.♟b5 ♟a6 (8... ♜d8
 9.♝d2) 9.♝e3
 8...♟e7 9.♝x4?!

♝x4 10.g3 ♝e3+ 11.♞g2 ♝x4!/? *Not best, but not far off either.* 12.♞xf6 ♝x6 13.♞f1 ♟d7 14.d4 ♟c6 15.♟d2 O-O 16.♞f4 ♝g7! (16...h5? 17.♞f5 ...) 17.♞xg4 ♟b6 (17...♟de5 is a little better) 18. ♞e2 ♟xc4 19.♞xc4 ♝d7 20 d5 b5! (20...♟e5 21.♞xc7 ♞fd8 is also good.) 21.♞e2 (21.♞xb5) 21...♟e5 22. ♞f1 a6 23.b3 c5 24.h3 c4 25.bxc4 ♟xc4 26. ♟f3 f5 27.♟g5 fx4!!! (27...♞ae8! dominates, but...) 28.♞xe4 ♝f5 29.♞xf5 ♞xf5 30.♞e6+ (30.♞xf5?? ♟e3+) 30... ♞h8 31.♟f7+ ♞xf7 32.♞xf7 *There is nothing much better, and with no helpers for the White Queen only a little care is required of Black to ensure a win.* ...♝xc3 33.♞b7 ♞f8 34.♞e7 ♞g8 35.♞b7 ♝e5 36.g4 ♞f8 37.♞a7 a5 38.h4 ♞f4 39.♞b8+ ♞g7

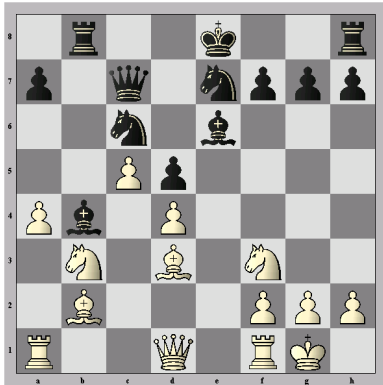
40. ♖×b5 (see Diagram)



40... ♖e3+ 41. ♖g1
 ♖f1+ 42. ♖×f1
 ♖×f1 43. ♖×f1
 ♖g3 44. h5 ♖f6
 45. ♖g2 ♖h4
 46. ♖f3 ♖e5 47. a3
 a4 48. ♖e3 ♖g5+
 49. ♖d3 ♖c1
 50. ♖c4 ♖×a3
 51. ♖b5 ♖×d5 0-1

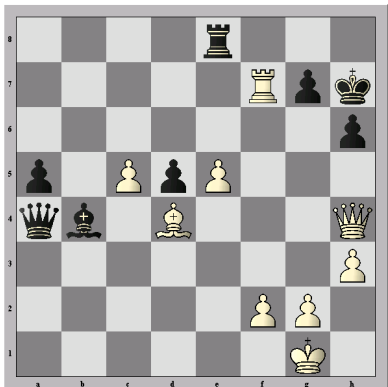
White: Anderson, Donald
 Black: Merickel, Jim
 Event: WCCC Championship, Round 1
 Date: May 2, 2002

1. e4 e6 2. d4 d5 3. ♖d2 c5 4. c3 c4 (4... c×d4 5. c×d4
 d×e4 6. ♖×e4 ♖b4+ 7. ♖c3 ♖c6 8. ♖f3 ♖f6 9. ♖g5)
 5. exd5 exd5 6. ♖gf3 ♖c6 7. ♖e2 ♖d6 8. b3 b5 9. a4
 ♖a5 10. ♖b2 b4 11. c×b4 ♖×b4 12. b×c4 ♖e6 13. 0-0



0 ♖ge7 14. ♖b3 ♖c7
 15. c5 ♖b8 16. ♖d3
 (see Diagram)

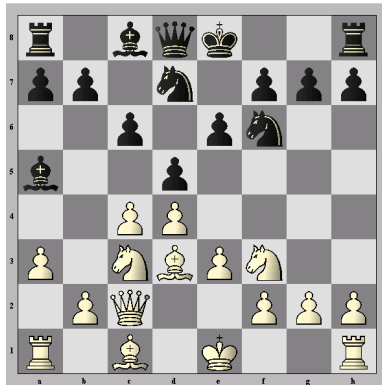
16. . . a6 [16... 0-0
 17. ♖g5 ♖f5
 18. ♖×f5 ♖×f5
 19. ♖h5 h6 20. ♖h7
 ♖f×d4 21. ♖f6+
 g×f6 (21... ♖h8
 22. ♖×d5) 22. ♖×d4
 ♖×d4 23. ♖×d4]
 17. ♖c2 0-0 18. ♖b1
 ♖f4 19. ♖c1 ♖f6
 20. h3 ♖f5 21. ♖×f5 ♖×f5 22. ♖b2 ♖fe8 23. ♖e5
 ♖×e5 24. d×e5 ♖e6 25. ♖d4 ♖×d4 26. ♖×d4 ♖c6
 27. ♖g4 ♖e6 28. ♖fc1 ♖g6 29. ♖h4 a5 30. ♖c3 ♖e8
 31. ♖g3 ♖ee6 (31... ♖ge6 32. ♖g4 ♖g6 33. ♖f4 ♖×g3
 34. ♖×g3 ♖×c5? 35. ♖c1) 32. ♖d8+ ♖e8 33. ♖h4 h6
 34. ♖bb3 ♖×g3 35. ♖×g3 ♖h7 36. ♖f3 (36. ♖×g7+
 ♖×g7 37. e6+ ♖h7 38. ♖f6 ♖g8 39. ♖×f7+)
 36... ♖×a4 37. ♖×f7
 See Diagram



37... ♖×c5 (37... ♖e6
 38. ♖c7 ♖d1+
 39. ♖h2 ♖d2 40. ♖b2
 ♖g5 1. ♖g3)
 38. ♖g4 ♖f8
 (38... ♖g8 39. ♖f5+
 ♖h8 40. ♖×c5 ♖d1+
 41. ♖h2 a4 42. e6)

39. e6 h5 40. ♖×g7+ 1-0

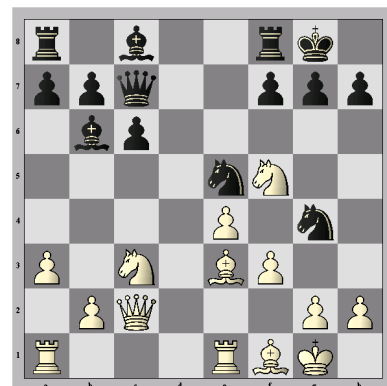
White: Shaffer, Greg
 Black: Dawley, D
 Event: U.S. Amateur Championship, East
 Date: 2002



1. d4 c6 2. c4 ♖f6
 3. ♖c3 d5 4. e3 e6
 5. ♖f3 ♖b4 6. a3 ♖a5
 7. ♖c2 ♖bd7 8. ♖d3
 (Michael Bury
 tells me this is
 a horrible
 positional
 blunder, see
 Diagram.) 8... d×c4
 9. ♖×c4 0-0 10. 0-0
 ♖e7 11. e4 e5 12. ♖e1
 exd4 13. ♖×d4 ♖e5

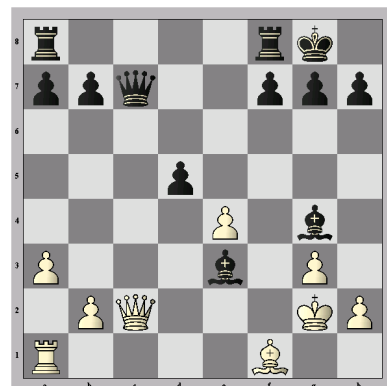
14. ♖f1 ♖b6 15. ♖e3 ♖fg4 16. ♖f5 (16. ♖a4
 seems to avoid all of this) 16... ♖c7!
 17. f3 (see Diagram)

(17. ♖e2 was needed here. Jim White
 suggested 17. ♖g3. That is much better



but still
 allows me to
 get away with
 things like
 17... ♖×e3 18. f×e3
 ♖×h2) 17... ♖×f5
 18. f×g4 [18. ♖d5
 helps but not
 enough after
 18. . . c×d5 19. ♖×c7
 ♖×c7 20. f×g4 ♖×g4
 21. exf5 ♖×e3)
 18... ♖×g4 19. g3

♖×e3 20. ♖×e3 ♖×e3+ 21. ♖g2 ♖g4 (21... ♖e6)
 22. ♖d5 c×d5!! see Diagram, White
 Resigns. 0-1



White would
 have little to
 look forward to
 after 23. ♖×c7
 ♖ac8 when the
 best he could
 do would be
 24. ♖×c8 ♖×c8
 (everything
 else is much
 worse). I must
 say it was very
 strange (and

fun) to be able to "hang" my Queen to
 take a Knight, especially in the last
 round of an event like the USATE.

Heandegas Memorial Tournament

October 3 – 28, 2001

| | | Post Rating | Rd1 | Rd2 | Rd3 | Rd4 | Total |
|---|--------------------|-------------|-----|-----|-----|-----|-------|
| 1 | Michael Bury | 2230 | ½ B | W5 | W4 | W2 | 3 ½ |
| 2 | Mel Ross | 1762 | ½ B | W8 | W6 | L1 | 2 ½ |
| 3 | Jim White | 1592 | L4 | B | D8 | W6 | 2 ½ |
| 4 | Keith Johnson | 1744 | W3 | L6 | L1 | W9 | 2 |
| 5 | Roy Eikerenkoetter | 1605 | L6 | L1 | W9 | W8 | 2 |
| 6 | Charles Jay | 1382 | W5 | W4 | L2 | L3 | 2 |
| 7 | Jim Larsen | 1827 | L8 | ½ B | ½ B | ½ B | 1 ½ |
| 8 | Tony Bowden | 1633 | W7 | L2 | D3 | L5 | 1 ½ |
| 9 | Joe Abner | 1378 | ½ B | ½ B | L5 | L4 | 1 |

First Saturday Quad, November 3, 2001

(Edited. Club Member Results.)

Quad 1

| | | Post Rating | 1 | 2 | 3 | 4 | Total |
|---|---------------|-------------|---|---|---|---|-------|
| 1 | Rich Harry | 1936 | * | D | W | W | 2 ½ |
| 2 | Jim Larsen | 1827 | D | * | D | W | 2 |
| 3 | Mel Ross | 1757 | L | D | * | D | 1 |
| 4 | Steve Pavolic | 1745 | L | L | D | * | ½ |

Quad 2

| | | Post Rating | 1 | 2 | 3 | 4 | Total |
|---|--------------------|-------------|---|---|---|---|-------|
| 1 | Larry Dulany | 1802 | * | W | W | W | 3 |
| 2 | Roy Eikerenkoetter | 1623 | L | * | D | W | 1 ½ |
| 3 | David Bolig | 1741 | L | D | * | D | 1 |
| 4 | Henry Haynes | 1700 | L | L | D | * | ½ |

Swiss

| | | Post Rating | 1 | 2 | 3 | Total |
|---|----------------|-------------|----|----|----|-------|
| 1 | Charles Jay | 1409 | D2 | W6 | W3 | 2 ½ |
| 2 | Zach Stoltzfus | 1226 | D1 | W4 | W5 | 2 ½ |
| 3 | James Merickel | 1368 | W4 | W5 | L1 | 2 |
| 4 | Matt Horst | 1253 | L3 | L2 | W6 | 1 |
| 5 | Kevin Moss | 1154 | W6 | L3 | L2 | 1 |
| 6 | Ron Thoman | 1253 | L5 | L1 | L4 | 0 |

WCCC November Swiss

October 21 – November 21, 2001

| | | Post Rating | Rd1 | Rd2 | Rd3 | Rd4 | Total |
|----|--------------------|-------------|-----|-----|-----|-----|-------|
| 1 | Donald Anderson | 1582 | W9 | L3 | W4 | D2 | 2 ½ |
| 2 | Jim White | 1551 | L8 | W7 | W9 | D1 | 2 ½ |
| 3 | Jerome Starks | 1824 | W4 | W1 | U | U | 2 |
| 4 | Roy Eikerenkoetter | 1622 | L3 | W5 | L1 | W7 | 2 |
| 5 | Tony Bowden | 1619 | ½ B | L4 | U | W10 | 1 ½ |
| 6 | Broxie Pace | 1785 | W7 | F | U | U | 1 |
| 7 | Charles Jay | 1394 | L6 | L2 | W10 | L4 | 1 |
| 8 | Joe Abner | 1404 | W2 | F | U | U | 1 |
| 9 | Jake De Laurier | 1104 | L1 | B | L2 | U | 1 |
| 10 | Bryan Boosz | 1181 | U | U | L7 | L5 | 0 |

U-Unplayed B-Bye

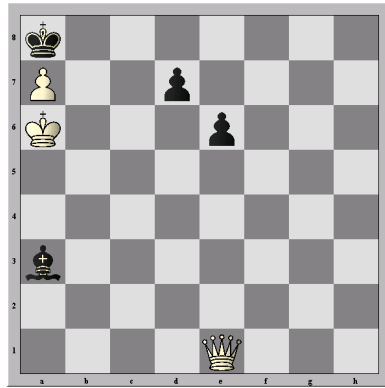
WCCC Winter Swiss 1

January 9 – January 30, 2002

| | | Post Rating | Rd1 | Rd2 | Rd3 | Rd4 | Total |
|----|--------------------|-------------|-----|-----|-----|-----|-------|
| 1 | David Bolig | 1735 | W3 | D4 | D5 | W8 | 3 |
| 2 | Keith Johnson | 1711 | W8 | ½ B | ½ B | W10 | 3 |
| 3 | James Merickel | 1552 | L1 | W9 | W6 | W7 | 3 |
| 4 | Rob Upleger | 1571 | W15 | D1 | W10 | U | 2 ½ |
| 5 | Jake De Laurier | 1386 | W7 | W6 | D1 | U | 2 ½ |
| 6 | Roy Eikerenkoetter | 1600 | W16 | L5 | L3 | W14 | 2 |
| 7 | Jim White | 1551 | L5 | W14 | W12 | L3 | 2 |
| 8 | Charles Jay | 1393 | L2 | W15 | W13 | L1 | 2 |
| 9 | Greg Shaffer | 1767 | L11 | L3 | ½ B | W15 | 1 ½ |
| 10 | Donald Anderson | 1591 | W14 | ½ B | L4 | L2 | 1 ½ |
| 11 | Mel Ross | 1802 | W9 | U | U | U | 1 |
| 12 | Justin Rengert | 1680 | ½ B | ½ B | L7 | U | 1 |
| 13 | Tony Bowden | 1596 | ½ B | ½ B | L8 | U | 1 |
| 14 | Bryan Boosz | 1092 | L10 | L7 | D15 | L6 | ½ |
| 15 | Margaret Brakel | 1019 | L4 | L8 | D14 | L9 | ½ |
| 16 | Richard Lathem | 1254 | L6 | U | U | U | 0 |

U-Unplayed B-Bye

White to Mate in 2



Answer on page 2.