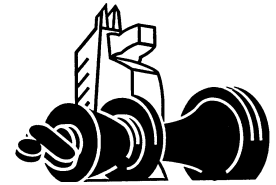


# The West Chesser



Rank and File Newsletter

Official Newsletter of the West Chester Chess Club

Wednesdays 7-11pm  
United Methodist Church  
129 South High Street  
West Chester, PA

Volume XXVII, Number 1

Spring 2001

Greg Shaffer, Editor

## WCCC Schedule

Date	Event (Director)
3/21	Club Championship (White)
3/24 & 3/25	<b>Chester County Open (White)</b>
3/28	Spring Swiss (Eikerenkoetter)
4/4	Spring Swiss (Eikerenkoetter)
4/7	Saturday Quads (Eikerenkoetter)
4/11	Spring Swiss (Eikerenkoetter)
4/18	Spring Swiss (Eikerenkoetter)
4/25	Club Champion Lecture
5/2	May Swiss (Bolig)
5/5	Saturday Quads (Bolig)
5/9	May Swiss (Bolig)
5/16	May Swiss (Bolig)
5/23	May Swiss (Bolig)
5/30	Open Night
6/2	Saturday Quads (Upleger)
6/6	June Swiss (Shaffer)
6/13	June Swiss (Shaffer)
6/20	June Swiss (Shaffer)
6/27	June Swiss (Shaffer)
7/4	<b>CLOSED – 4<sup>th</sup> of July</b>

## The Old Chessnuts Score Two Trophies at the 2001 USATE

Club members Roy Eikerenkoetter and Hal Marmorstein, along with Bob Hux and Ray Citron, played as The Old Chess Nuts at this year's US Amateur Team East. Their team score of 3.5 out of 6 won both the Senior and Old Timer's trophies at the event which was held in Parsippany, NJ on February 17<sup>th</sup> –20<sup>th</sup>. Bob Hux scored 2 points on board one, Ray Citron scored an impressive 5 points on board two, Hal Marmorstein scored 1 point on board three, and Roy Eikerenkoetter scored 4 points on board 6.

Other club members at the USATE included Michael Bury (3.5), Dave Bolig (2), and Greg Shaffer (3.5). Their team, the ACME CHESS TEAM, finished with a team score of 3 in the under 1800 section. Tony Bowden was also spotted at the tournament. He reported 3 points for both his team and his own result. ♔

## Chester County Open March 24 & 25

Come out and help make this event a success. This five round event will be held at the Coatesville Cultural Society, 139 E. Lincoln Highway, Coatesville, PA. Registration is 8:30-9:15, rounds are 9:30-1:30-6, 9:30-1:30. Half point byes accepted before round one. Contact Jim White (610-269-7639) for more information or to pre-register. ♔

## West Chester Chess Club February 2001 Ladder Ratings

*By Margaret Brakel*

WCCC Rank	Name	WCCC		USCF	
		2/2001	+/-	ID #	Apr-01
1	Bury, Michael	2123		10182964	2242
2	Chressanthis, George	1892		12401931	2121
3	Pariseau, Rich	1863		10156475	1943
4	Polsky, Yury	1783		12545399	2048
5	Polka, Brian	1679		12521490	1832
6	Larsen, Jim	1632		11445811	1832
7	Bolig, Dave	1541	-40	12532090	1725
8	Shaffer, Greg	1531	23	12402490	1743
9	Ross, Mel	1489	-18	12530794	1788
10	Johnson, Keith	1465	-15	10165504	1729
11	Sundwall, Howard	1450		12282750	1523
12	White, Jim	1449	-97	12548044	1544
12	Maynard, Jack	1449		12041320	1537
14	Upleger, Rob	1427	43	12564275	1537
15	Eikerenkoetter, Roy	1425	-4	10159130	1637
16	Marmorstein, Hal	1401		10160189	1720
17	Bowden, Tony	1383		12457871	1669
18	O'Mara, Rob	1357		12762899	1568/14
19	Flynn, Patrick	1309		12472883	1425
20	Crompton, John	1287	5	12618545	1395
21	Pratt, Greg	1280		12672055	1514
22	Jay, Charles	1252	108	12467954	1405
23	Bhame, Tom	1232	27	12780682	1489
24	Gregore, Kevin	1220		12503004	1236
25	Anderson, Donald	1216	-20	12411156	1353
26	Merickel, Jim	1190	-2	12483017	1357
27	Brakel, Margaret	1133	11	11191177	1176
28	Lucas, Mark	1024	-4	12714044	1214

**This month's Ladder Champion is Charles Jay with +108!**

**To stay on the club rating list, play in the club events !**

## TREASURER'S ISLAND by *Mark Lucas*

We have analyzed the club's financial records for 2000 and wish to report the results. The past year has been disastrous for the club monetarily, mainly due to a continuing substantial decrease in entrees at our Saturday quads.

As of January 1<sup>st</sup>, we had about \$650.00 in our checking account at Sovereign Bank. Last year on January 1<sup>st</sup>, we had about \$1100.00, and the previous year we had about \$1400.00. As you can see, we have been on a steady decline since the end of 1998. We started noticing this year's slide at the end of May 2000 and called a special officer's meeting in June to address the problem and define a plan of recovery. At that time, the club's expenditures for the year outweighed its revenues by about \$500.00. In an effort to cut our losses, we decided to eliminate former members (more than 1 years dues owed) newsletter subscriptions, the newsletter cartoon, and two issues of the newsletter per year. We also temporarily suspended Mike Bury's "Buried Treasures" article (\$35.00 per issue), and reduced the newsletter editor's payment from \$35.00 per issue to \$20.00 per issue. Since that time, we have recovered about \$50.00 of our losses, which essentially means we are at least in a balanced state.

Unfortunately, the USCF is also in a period of financial crisis, even though there are more members now than at any other point in the Federation's history. Most are blaming their woes on mismanagement of their funding. As a result, they have chosen to address their problems by passing them down to their club affiliates. At the start of the year, the USCF club affiliates will no longer receive a \$5.00 "finders fee" for signing up new members and renewing old memberships. Also, the rates for advertising club events in Chess Life have skyrocketed. In the past, we could advertise our Saturday Quads for \$12.00 per month, and our larger tournaments for \$24.00 per month. Now, our Quads will cost \$50.00 per month to advertise, and our larger tournaments will be double or higher.

To compensate for these increases, we made additional budget cuts at our yearly officer elections meeting in December 2000. We will not be paying the editor for production of the newsletter until we are more financially stable. Also, we will not be advertising the first three months of our Saturday Quads in 2001.

We will also be lowering the tournament director's fee at the Saturday Quads from \$50.00 to \$40.00. Since these changes will not compensate for the USCF's increases, and we have made as many cuts as we

possibly can, we were forced to make some changes to our fees for our events and club memberships. Starting in April, the fee for our Saturday Quad events will be increased from \$15.00 to \$20.00. To compensate for this increase somewhat, the winner of the Quad will take home \$40.00 instead of \$30.00. Our club membership dues will remain at \$12.00 for renewals and new members. However, we have changed our prorating system for new members. If you are a new member, or a previous member who has not been to the club for over a year, and you would like to join from January to June, your payment will be the full \$12.00. If you join from July to December, your payment will be \$6.00. Previously, dues were prorated based on the remaining months in the year. For example, if you joined in December, you only owed \$1.00, and would receive the newsletter for the next thirteen months since we provide a one-year grace period on delinquent memberships. We needed to eliminate those kinds of loopholes in our payment/benefits system. We apologize for these increases, but our tournament fees and membership dues have remained unchanged for many years now, and the cost of doing business has caught up with us.

Since increasing our membership is another way of providing additional revenue, we will be advertising our club at local libraries, low cost newspapers and any other areas we can think of. We have also established a greeting committee to introduce new potential members to the club. We encourage everyone to bring interested people to the club. Speaking of memberships, it's a new year and now more than ever it's important that every active member's dues are current. Please pay your dues to any one of the officers or tournament directors as soon as you are able. Also, remember to complete a membership application form located in the gray cabinet in the church basement (even if you are a current member) so we can keep track of who is current and update your personal information in our records. On a final note, thanks to Yury Polsky who paid \$20.00 for his membership last year to help provide additional support to the club.




---

If you would like to pay dues by mail, please send your check to:

**Mark Lucas**  
**1074 Maple Street**  
**Honey Brook, PA 19344**

## Return of the Crosstables (Almost)

The following results have been made possible by the efforts of Jim White. They represent the scores as reported by the TD to the USCF. Because they are unrated, these results are technically 'unofficial'. As you can see, this format has some obvious shortcomings (no ratings, no final scores, and abbreviated names), but I hope you will still find them to be informative. Please note that a score of 5 represents a draw (.5).

### WCCC MARCH 1ST SAT. QUADS 01/06/2001

PLR#	NAME	1	2	3	4
1	CLAUSO	*	5	1	1
2	QUIGLE	5	*	5	0
3	KEESE,	0	5	*	1
4	CINTRO	0	1	0	*

PLR#	NAME	1	2	3	4
1	BRANDT	*	0	1	1
2	PAVOLI	1	*	0	1
3	ROSS, M	0	1	*	5
4	EIKERE	0	0	5	*

PLR#	NAME	1	2	3	4
1	CROMPT	*	1	1	0
2	MOYER,	0	*	0	0
3	JAY, CH	0	1	*	1
4	THOMAN	1	1	0	*

### WCCC JANUARY SWISS 01/10-01-31/2001

PLR#	NAME	1	2	3	4
1	BOLIG,	W---4	W---3	L---2	D---7
2	EIKERE	D---5	W---7	W---1	W---6
3	WHITE,	W---6	L---1	D---7	L---4
4	UPLEGE	L---1	B---0	W---5	W---3
5	ANDERS	D---2	L---6	L---4	B---0
6	JAY, CH	L---3	W---5	W---8	L---2
7	BOWDEN	B---0	L---2	D---3	D---1
8	SHAFFE	B---0	B---0	L---6	W---9
9	CLARK,	B---0	B---0	B---0	L---8

### WCCC MARCH 1ST SAT. QUADS 02/03/2001

QUAD1					
PLR#	NAME	1	2	3	4
1	CLAUSO	*	0	1	0
2	QUIGLE	1	*	0	0
3	MUCERI	0	1	*	0
4	CINTRO	1	1	1	*

QUAD2					
PLR#	NAME	1	2	3	4
1	ROSS, M	*	1	0	5
2	PAVOLI	0	*	1	5
3	DULANY	1	0	*	5
4	HAYNES	5	5	5	*

QUAD3					
PLR#	NAME	1	2	3	4
1	DONOVA	*	0	0	1
2	WHITE,	1	*	1	1
3	WHITE,	1	0	*	0
4	EIKERE	0	0	1	*

QUAD4					
PLR#	NAME	1	2	3	4
1	CASEY,	*	0	0	1
2	GREGOR	1	*	5	1
3	FLYNN,	1	5	*	0
4	SCOTT,	0	0	1	*

SWISS					
PLR#	NAME	1	2	3	
1	ANDERS	W---4	L---3	D---5	
2	CROMPT	L---5	W---6	W---3	
3	MOYER,	W---6	W---1	L---2	
4	CASEY,	L---1	W---5	L---6	
5	JAY, CH	W---2	L---4	D---1	
6	BRAKEL	L---3	L---2	W---4	

WCCC MARCH 1ST SAT. QUADS 03/03/2001

## QUAD1

PLR#	NAME	1	2	3	4
1	CLAUSO	*	5	1	1
2	THOMPS	5	*	1	5
3	MUCERI	0	0	*	0
4	ROSS, M	0	5	1	*

## QUAD2

PLR#	NAME	1	2	3	4
1	MOSS, P	*	0	0	0
2	BRANDT	1	*	0	0
3	PAVOLI	1	1	*	5
4	THOMAS	1	1	5	*

## QUAD3

PLR#	NAME	1	2	3	4
1	CASEY,	*	0	1	0
2	DONOVA	1	*	1	0
3	BELLIA	0	0	*	1
4	GREGOR	1	1	0	*

## QUAD4

PLR#	NAME	1	2	3	4
1	PRATT,	*	0	1	5
2	FLYNN,	1	*	1	5
3	THOMAN	0	0	*	5
4	ANDERS	5	5	5	*

## QUAD5

PLR#	NAME	1	2	3	4
1	MOYER,	*	1	0	0
2	JAY, CH	0	*	5	0
3	THOMPS	1	5	*	1
4	RAVERT	1	1	0	*

## QUAD6

PLR#	NAME	1	2	3	4
1	BARDWE	*	1	1	1
2	CASTAL	0	*	1	1
3	GLENN.	0	0	*	0
4	THOMAS	0	0	1	*

## What Do You Think?

In our last issue, we had the following question: After **1.f4 c5**, is there a better continuation than **2.e4**, which transposes into a variation of the Sicilian defense?

One response and one new question was received, so there was no need to call the governor to ask for clemency - this column will live on for at least one more issue. Here is the saving response:

*If I played the Bird Opening, **1.f4**, it would be to take my opponent "out of his book" as early as possible. Therefore, **1...c5 2.e4** would, in my opinion, be inconsistent with my intent, since he might be perfectly comfortable playing a closed Sicilian.*

*To me, the question is not whether or not **2.e4** or another move is "better," but rather what is White's grand opening strategy, and how forcefully will (can) he/she employ it. My preference, therefore, favors lines such as **1.f4 c5 2.g3 g6 3. Qg2 Qg7**, etc. (see ECO, 2nd ed., A02) or **1.f4 c5 2. Nf3 g6 3.e3 Qg7 4.c4 Nf6 5. Nc3 0-0 6.g3 Nc6 7. Qg2 d6** (see MCO-13, p.695)*

*Again, my general idea with **1.f4** is to take my opponent out to sea from the very first move, and to keep the pawn/piece configurations atypical, waiting for Black to stumble. Since the Bird Opening is seldom encountered at the highest levels of chess (its black square intentions are too obvious), it probably has value as a surprise weapon.*

Thanks much to the reader who sent that thoughtful response.

Question for next time: You're playing a master. After he has developed his king's knight and bishop in the opening, and before he has castled, he places his hand on his king's rook, holds it there, and looks directly at you. What is your response?

This actually happened, so at the very least next month we will find out how one player responded.

## Your Moves

This section of *The West Chess* showcases games played by our members. All members are encouraged to submit *any* game they have played, with or without commentary. The games need not be from club events.

White: **Larsen, Jim**

Black: **Ross, Mel**

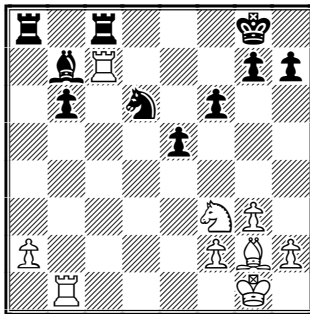
Event: Club Championship

Date: March 14, 2001

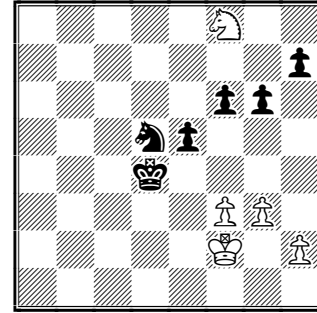
Notes by Mel Ross and Jim Larsen (marked JL)

“A surprisingly good game for me, as black.”

1.  $\text{d}3$   $\text{d}5$  2.  $\text{c}4$   $\text{e}6$  3.  $\text{g}3$   $\text{d}f6$  4.  $\text{g}2$   $\text{e}7$  5.  $0-0$   $\text{bd}7$  6.  $\text{b}3$   $\text{b}6$  7.  $\text{b}2$   $0-0$  8.  $\text{d}3$   $\text{b}7$  9.  $\text{bd}2$   $\text{c}5$  10.  $\text{c} \times \text{d}5$  better would  $\text{e}3$ , the text being non-thematic with the Reti – JL 10...  $\text{d} \times \text{d}5$  11.  $\text{e}4$   $\text{b}4$  12.  $\text{d}4$   $\text{d}3$  13.  $\text{c}3$   $\text{c} \times \text{d}4$  14.  $\text{d} \times \text{d}4$   $\text{d}3$   $\text{c}5$  I felt  $\text{e}5$  would result my pawn being pressured; this way, white's pawn is pressured 15.  $\text{e}2$   $\text{d}f6$  16.  $\text{e}5$   $\text{d}5$  17.  $\text{f}d1$   $\text{d}7$  18.  $\text{d}c4$   $\text{b}5$  19.  $\text{b}2$   $\text{a}5$  20.  $\text{f}ab1$  Anticipating my next move 20...  $\text{a}4$  I believe I have the better game here, but somehow I have less than 7 minutes to make my remaining 20 moves ?? 21.  $\text{d}6$   $\text{d}fd2?$  - JL 21...  $\text{d} \times \text{d}6$  22.  $\text{e} \times \text{d}6$   $\text{f}6$  23.  $\text{b} \times \text{a}4$   $\text{b}2$  24.  $\text{f} \times \text{b}2$   $\text{d} \times \text{a}4$  25.  $\text{f}b3$   $\text{e}5$  26.  $\text{d}e3$   $\text{d} \times \text{e}3$  27.  $\text{f} \times \text{e}3$   $\text{d}b2$  28.  $\text{f}b1$   $\text{d}c4$  29.  $\text{f}c3$   $\text{d} \times \text{d}6$  30.  $\text{f}c7$   $\text{f}c8$  Played under time pressure – it just felt right



31.  $\text{f} \times \text{c}8+$  Jim suggested 31.  $\text{f}d7$   $\text{f}d8$  32.  $\text{f} \times \text{d}8$   $\text{f} \times \text{d}8$  33.  $\text{f} \times \text{b}6$ , but in that case Black may fare better if he opts for 31...  $\text{d}e4$  (e.g. 32.  $\text{f}e1$   $\text{d} \times \text{f}3$  33.  $\text{d} \times \text{f}3$   $\text{e}4$  34.  $\text{d}g2$   $\text{f}d8$ ) – ed. 31...  $\text{f} \times \text{c}8$  32.  $\text{d}e1$   $\text{d} \times \text{g}2$  33.  $\text{g} \times \text{g}2$   $\text{b}5$  34.  $\text{d}d3$   $\text{g}f7$  35.  $\text{d}b4$   $\text{g}e6$  36.  $\text{f}3$   $\text{d}f5$  37.  $\text{g}f2$   $\text{d}d4$  38.  $\text{f}d1$   $\text{f}c4$  39.  $\text{a}3$   $\text{f}c3$  40.  $\text{f}d3$   $\text{f} \times \text{d}3$  41.  $\text{d} \times \text{d}3$   $\text{d}c2$  Completely missing the fork that would soon follow [and  $\text{g}d5$ , which looks very strong – ed] 42.  $\text{a}4$   $\text{b} \times \text{a}4$  43.  $\text{d}c5+$   $\text{g}d5$  44.  $\text{d} \times \text{a}4$   $\text{g}d4$  45.  $\text{d}b6$   $\text{d}e3$  46.  $\text{d}d7$   $\text{d}d5$  47.  $\text{d}f8$   $\text{g}6$  How many pawns am I going to lose to that knight?!



48.  $\text{d} \times \text{h}7$  but could white really afford to take that pawn? – ed.  $\text{f}5$  49.  $\text{h}4$   $\text{e}4$  50.  $\text{f} \times \text{e}4$   $\text{f} \times \text{e}4$  51.  $\text{d}g5$   $\text{g}d3$  52.  $\text{d}e6$   $\text{e}3+$  53.  $\text{g}e1$   $\text{e}2$  54.  $\text{g}4$   $\text{d}e3$  55.  $\text{d}f4+$  and a draw followed within a few moves. After the game, Brian Polka correctly pointed out that 54.  $\text{g}e3$  wins due to the threat of  $\text{d}b4$ - $\text{c}2$  mate.  $\frac{1}{2}$  -  $\frac{1}{2}$

White: McKeen

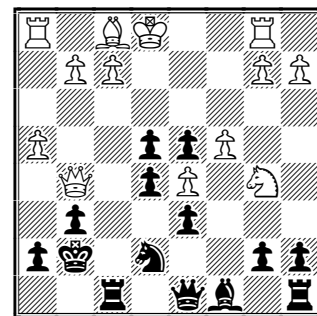
Black: Shaffer, Greg

Event: South Jersey Swiss

Date: 1997

Please send me any games you have or the next issue might contain nothing but my wins against those of you who haven't submitted games lately! – ed.

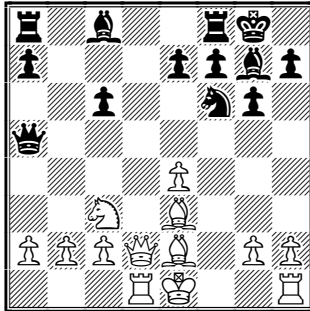
1.  $\text{d}4$   $\text{g}6$  2.  $\text{c}4$   $\text{d}g7$  3.  $\text{d}c3$   $\text{d}6$  4.  $\text{e}4$   $\text{d}c6$  5.  $\text{d}5$   $\text{d}d4$  6.  $\text{d}e3$   $\text{c}5$  7.  $\text{d}ge2$   $\text{b}b6$  8.  $\text{f}b1$   $\text{e}5$  9.  $\text{h}3$   $\text{d}e7$  10.  $\text{g}d2$   $0-0$  11.  $\text{d}h6$   $\text{f}5$  12.  $\text{d} \times \text{g}7$   $\text{g} \times \text{g}7$  13.  $\text{g}g5$   $\text{g}d8$  14.  $\text{d} \times \text{d}4$   $\text{c} \times \text{d}4$  15.  $\text{d}b5$   $\text{f} \times \text{e}4$  16.  $\text{h}4$



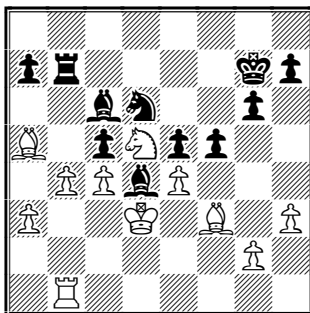
16...  $\text{d}f5?$ !  $\text{g}a5+$  leads to stronger lines 17.  $\text{g} \times \text{d}8$   $\text{f} \times \text{d}8$  18.  $\text{d}c7$   $\text{f}b8$  19.  $\text{g}4$   $\text{d}h6$  20.  $\text{g}5$   $\text{d}f5$  21.  $\text{d}g2$   $\text{e}3$  22.  $\text{f} \times \text{e}3$   $\text{d} \times \text{e}3$  23.  $\text{d}f1$   $\text{d}f5$  24.  $\text{f}c1$   $\text{a}6$  25.  $\text{d}h3$   $\text{d} \times \text{h}3$  26.  $\text{f} \times \text{h}3$   $\text{d}g2+$  27.  $\text{g}f2$   $\text{d}f4$  28.  $\text{f}f3$   $\text{f}bc8$  29.  $\text{d}e6+$   $\text{d} \times \text{e}6$  30.  $\text{d} \times \text{e}6$   $\text{f}f8$  31.  $\text{b}3$   $\text{f} \times \text{f}3+$  32.  $\text{g} \times \text{f}3$   $\text{f}e8$  33.  $\text{g}e4$   $\text{f} \times \text{e}6$  34.  $\text{g}d5$   $\text{g}f7$  35.  $\text{b}4$   $\text{d}3$  36.  $\text{g}e4$   $\text{g}e7$  37.  $\text{a}4$   $\text{b}6$  38.  $\text{f}d1$   $\text{g}d7$  39.  $\text{f} \times \text{d}3$   $\text{g}c6$  40.  $\text{f}d5$   $\text{f}e7$  41.  $\text{b}5+$   $\text{a} \times \text{b}5$  42.  $\text{a} \times \text{b}5+$   $\text{g}c7$  43.  $\text{f}d3$   $\text{f}f7$  44.  $\text{f}f3$   $\text{f} \times \text{f}3$  45.  $\text{g} \times \text{f}3$   $\text{g}d7$  46.  $\text{g}e4$   $\text{g}e6$  47.  $\text{g}f3$   $\text{g}f5$  48.  $\text{g}e3$   $\text{g}g4$  0-1

White: Tamborro, M (1912)  
 Black: Larsen, Jim (1832)  
 Event: WCCC Club Championship  
 Date: March 7, 2001

1.e4 c5 2.♘f3 ♘c6 3.d4 cxd4 4.♘xd4 g6 5.♙e3  
 ♘f6 6.♘c3 ♙g7 7.f3 0♖0 8.♙d2 d5 9.♘xc6  
 bxc6 10.♙d1 ♙a5! 11.♙e2 dxe4 12.fxe4



12...♘g4 13.♙d4 ♙d8 14.♙b6 ♙xd2 15.♙xa5  
 ♙xd1+ 16.♘xd1 c5 17.c4?! ♙d4 18.h3 ♘f6  
 19.♙f3 e5?! 20.♙e2 ♙b8 21.b3 ♙b7 22.♙d3  
 ♙c6 23.♘c3 ♙b7 24.♘d5 ♙g7 25.♙b1 ♘e8  
 26.a3 ♘d6 27.b4 f5!



28.♙f1 ♘xc4 29.♙c1 ♘xa5 30.bxa5 ♙b3+  
 31.♙e2 ♙xd5 32.exd5 e4 0♖1

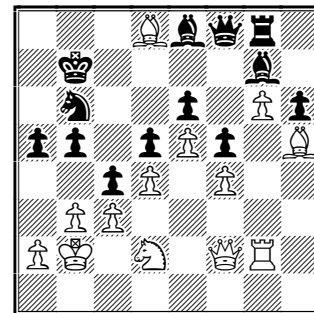
**Solution to Just Solve It:**

1...♙ae8! 2.♙aa2 ♙xh2+! 3.♙xh2 ♙xe1+  
 4.♙g2 [4.♙f2 ♙xh2+ 5.♙xe1 ♙xa2] 4...♙xh2+  
 5.♙xh2 ♙xc1 -+

Sorry, but I could not locate the game score that leads to this position. The information I have is that the position is from Kovacs–Gombas Budapest, 1959. Note that while there appear to be other possibilities for White, they probably just prolong the agony since White’s defenses are overpowered. For example, after 2.♙f1, Black has 2...♙xe2 3.♙xe2 ♙xg3 4.♙a2 ♙h4! leaving White with no way to fend off Black’s strong attack since 5♖ ♙xh2! can’t be met by 6.♙xh2 because 6♖ ♙e1+ would then win the queen for the exchange.

White: Polka, Brian  
 Black: Upleger, Rob  
 Event: WCCC Swiss  
 Date: May 31, 2000

1.e4 d6 2.d4 g6 3.♘c3 ♙g7 4.♙e3 ♘d7 5.♙d2  
 e6 6.h4 f6 7.0♖0♖0 ♘b6 8.f4 ♙d7 9.♘f3 c6  
 10.h5 ♘e7 11.♙e2 ♙c7 12.♙h2 0♖0♖0 13.♙dh1  
 ♙e8 14.g4 ♙f7 15.♙e1 g×h5 16.g×h5 h6  
 17.♙g2 ♙hg8 18.♙hg1 ♙h8 19.♘h4 ♙xg2  
 20.♙xg2 f5 21.♘g6 d5 22.e5 ♙g8 23.♙g1 ♘xg6  
 24.h×g6 ♙e8 25.♙f2 ♙e7 26.♙h5 ♙g7  
 27.♙h2 ♘c4 28.♘b1 ♙b4 29.b3 ♘b6 30.c3  
 ♙f8 31.♙b2 ♘d7 32.♙h4 b5 33.♙g1 a5  
 34.♙f1 ♙b7 35.♘d2 ♘b6 36.♙f2 c5



37.♙d8 c4 38.♙h4 ♙c6 39.♙e7 ♙c8 40.♙f6  
 ♘d7 41.♙d1 ♙f8 42.♙e7 ♙e8 43.♘f1 ♙f8  
 44.♙x8 ♙x8 45.♘d2 ♙c7 46.♘f3 ♙b6  
 47.♙h1 b4 48.♙e1 ♙c7 49.♙g1 ♘b6 50.♘h4  
 ♙e8 51.♙g3 a4 52.g7 bxc3+ 53.♙xc3 ♙a3  
 54.♙g2 ♙c1+ 55.♙c2 ♙e3+ 56.♙b2 ♙xd4+ 0-1

**The WCCC Wednesday Night TD’s for 2001**

Don Anderson	(610) 578-2051	dranders@us.ibm.com
Dave Bolig	(610) 323-5539	dbolig@msn.com
Roy Eikerenkoetter	(610) 627-1106	Roi2e7@aol.com
Greg Shaffer	(610) 284-2072	greg@shaffer.net
Rob Upleger	(610) 873-9374	robu@chesco.com
Jim White	(610) 269-7639	ChessJimW@aol.com

**WCCC Officers**

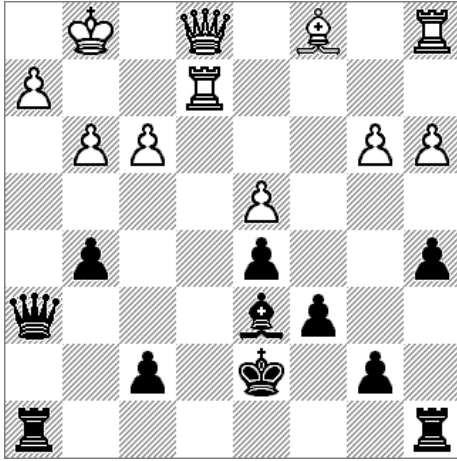
Dave Bolig, President  
 Jim White, Chief TD  
 Rob Upleger, Secretary  
 Mark Lucas, Treasurer  
 Greg Shaffer, Newsletter Editor

**Do you have an email address?**

If I haven’t already emailed you, please send me your address so I can send you the newsletter by email.

greg@shaffer.net

## Just Solve It



**Black to play and win**  
*(winning tactics)*