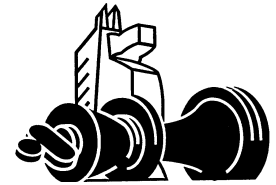


The West Chesser



Rank and File Newsletter

Official Newsletter of the West Chester Chess Club

Wednesdays 7-11pm
United Methodist Church
129 South High Street
West Chester, PA

Volume XXVI, Number 4

Nov/Dec 2000

Greg Shaffer, Editor

WCCC Schedule

Date	Event (Director)
11/29	Winter 3 Round Swiss (Bolig)
12/2	Saturday Quads (Bolig)
12/6	Winter 3 Round Swiss (Bolig)
12/13	Winter 3 Round Swiss (Bolig)
12/20	Elections
12/27	Open
1/3	Winter Swiss
1/6	Saturday Quads
1/10	Winter Swiss
1/17	Winter Swiss
1/24	Winter Swiss
1/31	Open
2/3	Saturday Quads
2/7	Club Championship
2/14	Club Championship
2/21	Club Championship
2/28	Club Championship
3/3	Saturday Quads
3/7	Club Championship
3/14	Club Championship

Haendiges 2000 Ends in Tie

The 2000 Haendiges took place from 10/4 through 10/25. Eleven players participated in the four round swiss with a \$120 prize fund. The tournament was wide open with 9 of the 11 players still having an opportunity to claim a prize entering the last round. In the end, Mel Ross and Jim White tied for first with 3.5 each. Third was Dave Bolig with 3. New WCCC member Patrick Flynn took fourth place and the U1600 prize with a score of 2.5. Rob Upleger and Roy Eikerenkoetter tied for fifth with 2 points each. Seventh was shared by Charles Jay and Don Anderson. Jim Larsen, Mark Lucas and Margaret Brakel each scored 1 to share ninth.



Annual Meeting & Elections on December 20th

The annual club meeting and elections will be held on December 20th. While it seems unlikely (although not impossible given recent political events) that your participation will influence the outcome of the race for US President, your participation is important for the continued successful operation of our club. Please make the time to come to this meeting, voice your opinions, and vote. Please see Dave Bolig's article on page three for more details.



Note: 2001 tournament directors assignments have not been determined at this time.

West Chester Chess Club November 2000 Ladder Ratings

By Margaret Brakel

WCCC Rank	Name	WCCC		USCF	
		11/2000	+/-	ID #	12/2000
1	Bury, Michael	2123		10182964	2242
2	Pariseau, Rich	1863		10156475	1937
3	Polsky, Yury	1783		12545399	2048
4	Polka, Brian	1679		12521490	1832
5	Larsen, Jim	1632	-47	11445811	1879
6	Bolig, Dave	1581	17	12532090	1742
7	White, Jim	1546	43	12548044	1603
8	Shaffer, Greg	1508	19	12402490	1713
9	Ross, Mel	1507	13	12530794	1747
10	Johnson, Keith	1480	-20	10165504	1691
11	Sundwall, Howard	1450		12282750	1523
12	Maynard, Jack	1449		12041320	1537
13	Eikerenkoetter, Roy	1429	12	10159130	1669
14	Marmorstein, Hal	1401		10160189	1720
15	Upleger, Rob	1384	-12	12564275	1533
16	O'Mara, Rob	1357		12762899	1568/14
17	Flynn, Patrick	1309		12472883	1400
18	Crompton, John	1282		12618545	1363
19	Pratt, Greg	1280		12672055	1464
20	Anderson, Donald	1236	-43	12411156	1376
21	Gregore, Kevin	1220		12503004	1236
22	Bhame, Tom	1205	17	12780682	1489
23	Merickel, Jim	1192	-17	12483017	1365
24	Jay, Charles	1144	-25	12467954	1284
25	Brakel, Margaret	1122	14	11191177	1161
26	Lucas, Mark	1028	26	12714044	1195

This month's Ladder Champion is Jim White with +43!

To stay on the club rating list, play in the club events !

Club News by *Dave Bolig*

Since the end of the year will soon be upon us I thought that I would take this opportunity to inform everyone of some of the newsworthy happenings that have impacted the chess club recently. As many of you already know Michael Bury resigned as club president early this summer. Mike has been unable to attend on Wednesdays and felt that it would be inappropriate for him to continue as an absentee president. (There is no truth to the rumor the Mike has been skipping Wed. nights to serve as Kasparov's second against Kramnik). As a result I am again serving as club president.

I would like to encourage everyone to consider holding a club office and attend the club elections which will be held on Dec. 20. The elected offices include president, chief tournament director, secretary and treasurer.

At the moment, in addition to holding the office of president, I also hold the office of chief tournament director. I have no desire to hold two offices next year so it is important that people step up and share some of the responsibility of running the chess club.

There are some other issues affecting the club which will be discussed at the Dec. 20 meeting. Two of the issues which require attention concern the Saturday quads. The quads are the life blood of the chess club - they generate most of the clubs income. The typical turnout for the quads has fallen off slightly in the last few years but the club should be all right provided that club spending is modified accordingly. One way that

this can be accomplished is to reduce the fee that the club pays quad tournament directors. The current is fee \$50.00. I am going to propose that for 2001 the fee be reduced to \$20.00 plus an additional \$5.00 for each section in excess of four. I realize that this is a significant reduction, but its not as if anyone is directing the quads for the money! Another problem confronting the club is that the geniuses running the USCF and Chess Life have decided to raise advertising rates 625%. The net effect of this is that the annual budget for advertising the Saturday Quads in Chess Life just went from \$144 to \$900! As a result, the club will no longer be advertng in Chess Life. There are several alternative possibilities available (e.g., local newspapers and other area chess club newsletters). If anyone has any other ideas we need to hear them! The quads will go on, but we have to be aggressive and find other ways to get the word out.

The Wednesday night turn outs have been a little better than they were last year. Many players have taken advantage of the "show up and play when you wish" tournament policy. Overall, I would say that the policy has been a success. Please keep in mind that this policy makes life a little more difficult for the directors since they cannot do pairings in advance. Please try to let the director know, whenever possible, if you intend to miss a round. Hope to see you at the club on Wednesday nights.

2000 WCCC Volunteers

The club would like to acknowledge the following members for their assistance in 2000:

- **Don Anderson** – Tournament Director
- **Dave Bolig** – Acting Club President, Chief Tournament Director
- **Margaret Brakel** – Club Ratings
- **Michael Bury** – Club President
- **Roy Eikerenkoetter** – Tournament Director
- **Jim Larsen** – Tournament Director
- **Mark Lucas** – Treasurer
- **Jack Maynard** – Secretary
- **Greg Shaffer** – Newsletter Editor
- **Rob Upleger** – Tournament Director
- **Jim White** – Tournament Director

What Do You Think?

Occasionally I receive submissions for the newsletter that really don't fit into any of our regular sections, but are also too brief to be a separate article. I believe many of them are suitable for a question and answer format, so that is what I will be starting this month.

If all goes well, in each issue this column will have two parts – the first part will be responses to the previous issue's question(s) and the second part will be one or more questions for your consideration. To encourage participation, both questions and responses will be anonymous.

This Month's Question: After **1.f4 c5**, is there a better continuation than **2. e4**, which transposes into a variation of the Sicilian defense?

Your Moves

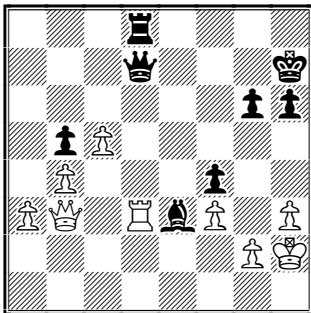
This section of *The West Chess* showcases games played by our members. All members are encouraged to submit *any* game they have played, with or without commentary. The games need not be from club events.

White: Schwartz, Mordecai
 Black: **Polsky, Yury**
 Event: Sunday Quads
 Date: September 9, 1990

Notes by Yury Polsky

“I came to US in summer 1981. But I could resume my chess tournament activity only after I defended a dissertation at the University of Michigan and got employed with West Chester University, where I am political science professor.”

1.e4 d6 2.d4 g6 3.c4 Qg7 4.Qc3 Qf6 5.Qf3 0-0 6.Qe2 Qbd7 7.0-0 e5 8.Qg5 h6 9.Qe3 c6 10.h3 Qe7 11.Qc2 exd4 12.Qxd4 Qc5 13.Qf3 Qe8 14.e5 otherwise, pawn is lost. White tries to complicate matters. But Black comes away with clear material advantage 14...dxe5 15.Qxc6 bxc6 16.Qxc6 Qf5 17.Qxc5 Qxc5 18.Qa4 Qd3 19.Qfc1 Qab8 20.Qxe8 Qxe8 21.Qd5 Qd8 22.b4 Qd6 23.Qe3 e4 24.c5 Qc7 25.a3 Qh5 26.Qa2 Qf4 27.Qe1 a6 28.Qb3 Qd7 29.Qd2 Qe6 30.Qed1 Qh7 31.Qc4 Qd4 32.Qa2 f5 33.Qd6 Qb5 34.Qxb5 axb5 35.Qc1 Qc8 36.Qb3 f4 37.Qcd1 Qd8 38.f3 Qd4+ 39.Qh2 Qe3 40.Qxd3 exd3 41.Qxd3

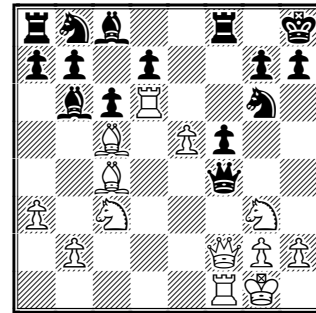


White counted on black's taking on d3 and permanent check. However, black is ready for this “trap.” 41...Qd4!! Now the result of the game is clear. 42.c6 Qe7 43.Qd1 Qb6 44.Qd7 Qxd7 45.cxd7 Qg7 46.Qd2 g5 47.Qd1 h5 48.Qd5 g4 49.fxg4 hxg4 50.Qd1 g3+ 51.Qh1 Qe5 52.h4 Qd8 53.Qg1 Qxh4 and white resigned. 0-1

White: Coraretti, Ron (1840)
 Black: **Merickel, Jim** (1315)
 Event: World Openn Major (side event), Rd 2
 Date: July ??, 1999

Jim says he is proud of his efforts in this game against a much higher rated player.

1.e4 e5 2.d4 exd4 3.c3 dxc3 4.Qc4 Qf6!? 5.Qxc3 Qb4 6.Qge2 Qe7 7.0-0 c6 8.Qe3 Qd6 9.f4 Qh6 10.Qg3 0-0 11.Qf3 Qh8 12.Qad1 f5 13.e5 Qb4 14.a3 Qa5 15.Qc5 Qb6 16.Qf2 Qg6 17.Qd6 Qxf4!



18.Qxf4? overlooking Qxb6 which holds with near equality for white. 18...Qxc5+ 19.Qh1 again missing an improvement, Qf2. 19...Nxf4 20.Qxf4 Qxd6 21.exd6 b5 22.Qa2 g6 23.h4 a5 24.h5 Qg7 25.Qce2 Qa6 26.Qd4 Qb7 27.Qf3 Qf6 28.Qd4 f4 29.Qe4 Qf5 30.hxg6 Qh5+ 31.Qg1 hxg6 32.Qf2 c5 33.Qd1 Qxe4 34.Qe1 Qd5 35.Qe7+ Qf6 36.Qxd5 Qxd5 37.Qxd7 b4 38.a4 c4 39.Qb7 Qxd6 40.Qb5 Qc8 41.Qe2 c3 42.bxc3 bxc3 43.Qb1 g5 44.Qh1 g4 0-1

White: **Merickel, Jim** (1315)
 Black: Steigman, A.J. (2214)
 Event: World Open Warm-up (open section), Rd 4
 Date: June? ??, 1999

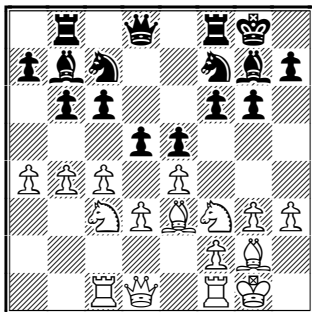
In this game, Jim develops a good game before falling to this 14 year old national master.

1.e4 c5 2.b4 cxb4 3.a3 d5 4.exd5 Qxd5 5.Qf3 Qg4 6.axb4 Qxf3 7.Qxf3 Qxf3 8.gxf3 e6 9.b5 Qd7 10.Qb2 Qgf6 11.f4 Qc5 12.d4 Qb4+ 13.c3 Qd6 14.Qg2 Qd5 15.c4 Qxf4 16.Qxb7 Qb8 17.Qe4 Qb4+ 18.Qc3 Qxc3+ 19.Qxc3 0-0 20.Qxa7 Qf6 21.Qc6 Qfd8 22.d5 exd5 23.c5 Qd3+ 24.Qf1 Qxc5 25.Qg1 d4 26.Qg5 Qe6 27.Qg3 dxc3 28.Qxc3 Qd4 29.Qc5 g6 30.Qg2 Qg7 31.f3 h6 32.Qa6 g5 33.b6 Qd6 34.b7 Qxc6 35.Qb6 Qd7 0-1

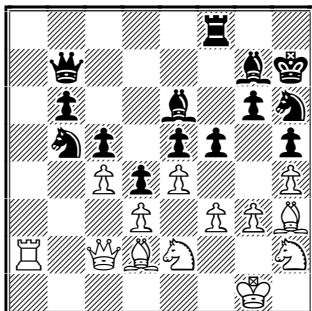
White: **Bolig, Dave** (1742)
 Black: **Upleger, Rob** (1526)
 Event: **WCCC 3 Round Fall Swiss**
 Date: **November 11, 2000**

Notes by Dave Bolig

1.c4 g6 The English Opening is known to be transpositional, black is probably hoping for 2. d4, transposing to a King's Indian or Gruenfeld. **2.g3** **3.♘g2 c6** **4.♗c3 ♗f6** **5.d3 ♖a6** **6.a3 ♞b8** **7.♙e3 0-0** White should probably play 8. ♘x6 but I thought that instead of losing a tempo after 8. ♘x6 ♞a1 9.♙e3 I'll develop and make black waste a tempo defending a6 **8.♗f3 b6** **9.0-0 ♝c7** **10.♞c1 ♘b7** **11.b4 ♗g4** **12.♙g5** The start of a questionable plan for white - force black to gain space in the center, with tempo. 12. ♘d2 was probably better. **12...f6** **13.♙f4 e5** **14.♙d2 ♝d8** **15.h3 ♗h6** **16.e4 ♗f7** **17.♙e3 ♗c7** **18.a4 d5** I overlooked this move, I never expected it after I played e4.

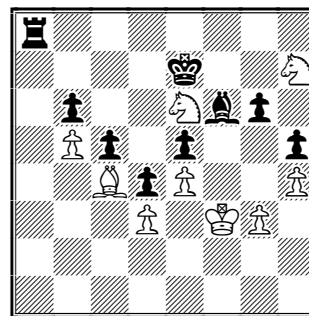


19.♙d2 d4 **20.♗e2 ♙c8** **21.b5 c5** **22.a5 ♙d7** **23.♞a1 ♝c8** **24.♝h2 ♗e6** **25.h4 ♙h6** **26.♙h3 ♙g7** **27.♝c1 h5** **28.♝g2 ♝h7** **29.♝c2 ♗h6** **30.♗h2 f5** **31.f3 ♝b7** **32.a×b6 a×b6** **33.♞a6 ♞a8** **34.♞fa1 ♗c7** **35.♞6a2 ♙e6** **36.♝g1 ♞×a2** **37.♞×a2 ♗×b5** I like blacks position here, but I'm sure that 2 pieces for the rook and pawn is best



38.c×b5 ♙×a2 **39.♝×a2 ♞a8** **40.♝e6 f×e4** **41.f×e4 ♞f8** **42.♝g2 ♝f7** Black is losing the initiative, after the queens come off black has a rook, a knight and a bad bishop.

43.♝×f7 ♞×f7 **44.♗f3 ♞a7** **45.♗g5+ ♝h8** **46.♙e6 ♙f6** **47.♗f3 ♝g7** **48.♙×h6+ ♝×h6** **49.♗eg1 ♞a3** **50.♙c4** This bishop is also bad, but it is active. **50...♞a7** Black is playing for a draw now, the rook is no threat by itself. **51.♗h3 ♝g7** **52.♗hg5 ♝f8?** Black should play ♙×g5, getting rid of his worst piece and one of whites well placed knights. Rob felt he could draw even with the bad bishop and he may be right, but allowing the knights to stay on the board makes his job much harder. **53.♗e6+ ♝e7** **54.♗fg5 ♞a3** **55.♗h7 ♞a7** **56.♝f3 ♞a8**



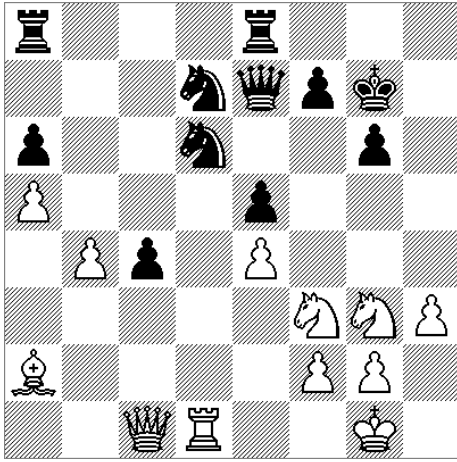
57.♗c7 ♞d8 **58.♗d5+ ♞×d5** **59.♙×d5 ♙g7** **60.g4 ♙h6** **61.g×h5 g×h5** **62.♗g5 ♝f6** **63.♗h3 ♙f8** **64.♗f2 ♙e7** **65.♝g3 ♙d8** **66.♝h3 ♝e7** **67.♗h1 ♝f8** **68.♗g3 ♝g7** **69.♗×h5+ ♝h6** **70.♝g4 ♝h7** **71.♗g3 ♝h6** **72.h5 ♝h7** **73.♝f5 ♝h6** **74.♙f7** Obviously not **74. ♝×e5 ♙c7+** winning the knight on g3. **74...♙c7** **75.♙g6 ♙b8** **76.♗f1 ♙c7** **77.♗h2 ♙d8** **78.♗f3 ♝g7** **79.♗×e5** and white went on to win. 1-0

Solution to Just Solve It: 1.♝g5!! f6 1...♗f6 2.♞×d6 ♝×d6 3.♗f5+ 2.♝g4 ♝h7 3.♗h4 ♗f8 3...♞g8 4.♙×c4 ♞g7 5.♞×d6 ♝×d6 6.♗hf5! 4.♗×g6! ♗×g6 5.♝h5+ ♝g7 6.♞×d6 with the threat of ♗f5 ensuring the win.

Here is the complete game score:
 Karpov – Spassky Moscow, 1973

1.e4 e5 **2.♗f3 ♗c6** **3.♙b5 a6** **4.♙a4 ♗f6** **5.0-0 ♙e7** **6.♞e1 b5** **7.♙b3 d6** **8.c3 0-0** **9.h3 ♗b8** **10.d3 ♙b7** **11.♗bd2 ♗bd7** **12.♗f1 ♗c5** **13.♙c2 ♞e8** **14.♗g3 ♙f8** **15.b4 ♗cd7** **16.d4 h6** **17.♙d2 ♗b6** **18.♙d3 g6** **19.♝c2 ♗fd7** **20.♞ad1 ♙g7** **21.d×e5 d×e5** **22.c4 b×c4** **23.♙×c4 ♝e7** **24.♙b3 c5** **25.a4 c4** **26.♙a2 ♙c6** **27.a5 ♙a4** **28.♝c1 ♗c8** **29.♙×h6 ♙×d1** **30.♞×d1 ♗d6** **31.♙×g7 ♝×g7** **32.♝g5 f6** **33.♝g4 ♝h7** **34.♗h4** 1-0

Just Solve It



White to play and win
(winning tactics - long)