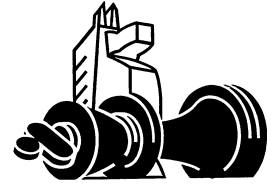


The West Chesser



Rank and File Newsletter

Official Newsletter of the West Chester Chess Club

Wednesdays 7-11pm
United Methodist Church
129 South High Street
West Chester, PA

Volume XXVI, Number 2

May/June 2000

Greg Shaffer, Editor

WCCC Schedule

Date	Event (Director)
5/24	Lecture – Reserve Champion
5/31 - 6/21	Summer Swiss I (Shaffer)
6/3	Saturday Quads (Shaffer)
6/17 & 6/18	Coatesville/West Chester Open (Jones)
6/28-7/12, 7/26	Summer Swiss II (Anderson)
7/19	*** Club is closed *** The room is not available
7/8	Saturday Quads* (Anderson)
8/2 – 8/23	Summer Swiss III (Bolig)
8/5	Saturday Quads (Bolig)
8/30	Open
9/2	Saturday Quads (Eikerenkoetter)
9/6 – 9/27	Fall Swiss (Eikerenkoetter)
10/7	Saturday Quads (Shaffer)
10/4 - 10/25	Haendiges (Shaffer)
11/1 – 11/15	Fall 3 Round Swiss (Anderson)
11/4	Saturday Quads (Anderson)
11/22	Open
12/2	Saturday Quads (Bolig)
11/29 – 12/13	Winter 3 Round Swiss (Bolig)
12/20	Elections

Coatesville-West Chester Open June 17-18

The Coatesville-West Chester Open will be held on June 17 and 18 at the Coatesville Cultural Society in Coatesville, PA. Last year's Chester County Open was held at this location and many players commented on the excellent facilities. Bob Jones will be the tournament director for this event. All club members are urged to play in this event, as we need a big turnout to make this event a success. Contact Greg Shaffer if you need directions, can offer a ride, or need a ride.

Here are the details of the tournament:

June 17-18. Coatesville-West Chester Open.

5SS. Rds. 1-3, 30/70, SD/30; Rds. 4-5, 40/90, SD/30. Coatesville Cultural Society, 139 E. Lincoln Highway, Coatesville, PA. EF: \$35 by 6/10, \$40 at site (\$5 less to WCCC and Coatesville CC members). \$\$800 (1st and 2nd b/25, others b/5 per class): \$150, 100; Top X, A, B, C, D/UNR. each \$100; \$50 top upset. Reg. 8:30-9:15 am. Rds. 9:30-1:15-4:45, 10-2:30. One half-pt. bye if requested before Rd. 1. Checks payable to WCCC. Ent: Bob Jones co/ Coatesville Cultural Society, 139 E. Lincoln Highway, Coatesville, PA 19320. (610) 384-1790



*These quads are being held on the 2nd Saturday of the month.

West Chester Chess Club March 2000 Ladder Ratings

By Margaret Brakel

WCCC Rank	Name	WCCC		USCF	
		5/3	+/-	ID #	6/2000
1	Bury, Michael	2117	+10	10182964	2248
2	Larsen, Jim	1667	-9	11445811	1820
3	Bolig, Dave	1564	-24	12532090	1725
4	Ross, Mel	1508	-9	12530794	1732
5	Johnson, Keith	1500		10165504	1746
6	White, Jim	1483	+8	12548044	1526
7	Shaffer, Greg	1482	+16	12402490	1678
8	Sundwall, Howard	1450	-11	12282750	1523
9	Maynard, Jack	1449		12041320	1537
10	Eikerenkoetter, Roy	1438	-4	10159130	1668
11	Upleger, Rob	1400	-14	12564275	1494
12	Marmorstein, Hal	1388	+26	10160189	1712
13	O'Mara, Rob	1357		12762899	1568/14
14	Anderson, Donald	1295	+27	12411156	1405
15	Crompton, John	1282		12618545	1358
16	Pratt, Greg	1257		12672055	1449
17	Gregore, Kevin	1220		12503004	1236
18	Jay, Charles	1174	-30	12467954	1242
19	Bhame, Tom	1173	+11	12780682	1433/15
20	Merickel, Jim	1163	-7	12483017	1352
21	Brakel, Margaret	1152	+10	11191177	1176
22	Lucas, Mark	1016		12714044	1213
23	Josephson, Matt	933		12542308	1473

This month's Ladder Champion is Don Anderson with +27!

The USCF ratings in this table were obtained from the USCF web site. They are the official ratings which will be published in the June rating supplement. The URL for the USCF is <http://www.uschess.org>. The online rating list also includes unofficial interim ratings, which are published each week.

To stay on the club rating list, play in the club events !

*We've got mail!***Tom Bhame**

I just read the March/April 2000 issue of the West Chesser and noted with pleasure the name of Tom Bhame. Warm, chuckling memories flooded into my mind.

The first time I met Tom Bhame was when I entered my 7th grade science class at Stetson Junior High School, in a classroom that has now been torn down. The year must have been about 1970 or 1971. It was a time of newly emerging hormones for me and I have vague memories of noticing girls for the first time in Tom Bhame's science class. Maybe it was Mr. Bhame's biology lessons. Maybe it was Sue What's-her-name. Despite these adolescent distractions, I still remember clearly the first thing he said on the first day of class. "Tom Bhame is my name, Science is my Fame, and Chess is my game!"

Tom ran the Stetson chess club, which I remember transferring into after my stint as puzzle editor of the school paper. Chess turned out to be lot more fun and a life-long pursuit and I've never been able to do the New York Times crossword puzzle anyway.

What many of you don't know is that Tom is one of the key people—along with Bob Fielding of East High School--who introduced and inspired a wave of youngsters in the West Chester area to take up the game. It's important to remember that at that time the Bobby Fischer era was beginning. Vast numbers of precocious kids were entering the community of chess players. Of course, it took the guidance and nurturance of patient chess club leaders to channel this adolescent energy.

Tom's legacy was the West Chester chess communities' good fortune. The Henderson and East High School chess teams dominated (and I mean really dominated) the Chesmont High-School league of the early 1970's, with players like Paul Garrett, Jay Ryan, Keith Johnson, Eloy Gomez, Mark Kinney, and a few others whose names I can't quite recall through the haze of time. I even remember that a group of Tom's alumni went on to win the top high-school trophy at the Eastern Pennsylvania Team Tournament one of those years.

Tom's influence was not only on the skills of us young chess players, but also on our demeanor and way of approaching the game, and perhaps even on our way of approaching life. Tom was man in touch with his inner child. In a quiet funny kind of way, he always saw the humor in things, always encouraged us to learn from our mistakes instead of dwelling on them, always pushed us to strive gently toward our personal improvement.

It was with these thoughts that I saw Tom's name in the newsletter. I know Tom disappeared from the organized chess scene for a while, but I always knew he'd come back. After all, chess is his game, and for many of us, it's his fame too! Thanks Tom.

Will Thalheimer
Portland, Maine

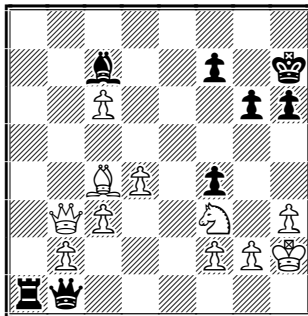
Your Moves

This section of *The West Chess* showcases games played by our members. All members are encouraged to submit any game they have played, with or without commentary. The games need not be from club events.

The following are two of my games with Bob Kampia, a nice guy. Our record against each other, during the past 15 years, is fairly even. One thing about him though: He always plays either the Bishop's Opening or the Vienna when he has White. My recent approach to his opening system has worked out pretty well for me.
–Roy Eikerenkoetter

White: Kampia, R. (1744)
Black: **Eikerenkoetter** (1635)
Event: North Penn Sectional, Round 2
Date: July 29, 1999

1.e4 e5 2.Bc4 Nf6 3.Nc3 c6 4.Qe2 a5 5.a3 b5 6.Ba2 Ba6 7.d3 b4 8.axb4 Bxb4 9.Bd2 0-0 10.Nf3 d6 11.0-0 Nbd7 12.Bg5 h6 13.Be3 Nc5 14.Nd1 a4 15.Bxc5 Bxc5 16.Re1 Bc8 17.Ne3 K h7 18.h3 Qe7 19.c3 g6 20.Nh2 Nh5 21.Qd2 Nf4 22.d4 Bb6 23.Nc4 Bc7 24.Re3 Be6 25.Rf3 Bxc4 26.Bxc4 Qg5 27.Rxf4 exf4 28.Nf3 Qf6 29.Qc2 Ra5 30.Rxa4 Rfa8 31.Rxa5 Rxa5 32.Qb3 Ra1+ 33.K h2 d5 34.exd5 Qf5 35.dxc6 Qb1 Resigns 0-1



White's resignation is a blunder. If 36.♔f1! Black must take the bishop before White can play his knight to d2, in which case White would win! And if Black answers 36...♗xf1, White gets the draw by perpetual check.

[In this position Black can maintain an advantage after 36.♔f1 with the simple 36...♗g7 because after 37.♘d2, Black can answer with 37...f3+ which forces 38.♗g1 ♖e1 39.♗d5 fxg2 40.♗xg2 ♗xd2 -+. However, this line can be avoided via 35.d6. Then, after 35...♗b1 36.♔f1 ♗xf1 37.♗xf7+ ♖h8 White not only has the perpetual in hand, but a strong advantage after 38.♗xf4
– ed & Fritz 3.1.]

White: Kampia, R. (1744)
Black: **Eikerenkoetter** (1635)
Event: North Penn Winter Robin, Round 4
Date: January 28, 2000

Notes by Roy Eikerenkoetter

1.e4 e5 2.Bc4 Nf6 3.Nc3 c6 4.Qf3 b5 5.Bb3 a5 6.a3 a4 7.Ba2 b4 8.axb4 Bxb4 9.Nxa4 0-0 10.Nc3 Ba6 11.d3 d5 12.Bd2 d4 13.Nb1 Qb6 14.Bb3 Nbd7 15.Og3 Bb7 16.Na3 Bxd2+ 17.K xd2 Qb4+ 18.K e2 Nh5 19.Og5 Nf4+ 20.K f3 Nxd3 21.Ne2 N3c5 22.Nc1 d3 23.c3 Qxe4+ 24.K g3 Nxb3 25.Nxb3 c5 26.f3 Qe2 27.Qc1 f5 More accurate is 27...♗a6 28.Re1 f4+ 29.K h3 **d2** [29...♗f5! is an easier win -ed. & Fritz 3.1] 30.Nxd2 Qa6 31.g4 fxg3 32.hxg3 Bxf3 33.Nxf3 Rxf3 34.Qd1 Qe6+ 35.K g2 Rf6 36.Qd3 Raf8 37.Re2 Qc6+ 38.K g1 Rf3 39.Qc4+ K h8 40.Rg2 Nb6 41.Qe2 e4 42.Nc2 Nd7 43.Ne3 Ne5 44.Ra6 Qb7 45.Ra1 Nd3 46.Rb1 Rf2 47.Qh5 Qc6 48.c4 Rxg2+ 49.Nxg2 Qf6 50.Qe2 Qd4+ 51.K h2 Rf6 52.Og4 Rh6+ 53.Nh4 Qxc4 54.Rf1 Rf6 55.Ra1 Rf2+ 56.K h3 Rf8 57.Ra7 Nf2 Resigns 0-1

White: Batezel, Cliffe (1886)
Black: **Shaffer, Greg** (1405)
Event: US Amateur Team East, Round 5
Date: February 18, 1984

1.d4 Nf6 2.c4 e6 3.Nf3 d5 4.Bg5 Be7 5.Nc3 c5 6.cxd5 exd5 7.e3 0-0 8.Qc2 Nc6 9.g3 Be6 10.Bg2 Rc8 11.a3 Qb6 12.dxc5 Qxc5 13.Bxf6 Bxf6 14.0-0 d4 15.Nxd4 Nxd4 16.exd4 Bxd4 17.Bxb7 Rc7 18.Be4 Bh3 19.Rfc1 f5 20.Qb3+ K h8 21.Bg2 Bxf2+ 22.K f1 Bxg2+ 23.K xg2 Be3 24.Rf1 Rcc8 25.Rad1 f4 26.Qd5 Qc7 27.Qe6 Qb7+ 28.Qd5? [28.♘d5] 28...Qxb2+ 29.K h3 Qxc3 30.Qd6 Bb6 31.Rxf4 Rxf4 32.Qxf4 Qxa3 33.Qg4 Rg8 conservative at best, but I wanted to make sure I held on to my biggest win ever 34.Rd7 Qb2 35.Qf4 a5 36.Qf7 a4 [36...Bg1] 37.Re7 Qf6 38.Qe8 h6 missing 38...♘c5; but at least not tempted by 38...♗xe8 39.♗xe8+ ♗f8 40.♗xf8# 39.Qd7 Rd8 40.Re8+ Rxe8 41.Qxe8+ K h7 42.Qe4+ Qg6 43.Qxa4 Bg1 missing a forced mate in 6 starting with 43...♗f5+ 44.Qg4 Qxg4+ 45.K xg4 Bxh2 46.K h3 Bxg3 47.K xg3 g5 48.K g4 K g6 49.K g3 h5 50.K f3 K f5 51.K g3 h4+ 52.K f3 g4+ 53.K g2 K f4 54.K f2 h3 55.K g1 g3 56.K h1 K f3 57.K g1 h2+ 58.K h1 g2+ 59.K xh2 K f2 and he finally resigns to losing to one of those annoying kids who play at the USATE 0-1

K

Treasurer’s Island by Mark Lucas

In the previous “Treasurer’s Island “ article I promised to find out what our club’s organizational status is with the Internal Revenue Service and provide an explanation. Article 501.c. of the Internal Revenue Code defines tax exempt organizations. We are currently registered as a not-for-profit organization under the status of section 501.c.(7) regarding social clubs (e.g., bowling leagues, softball leagues, etc.). This status allows us to maintain an interest bearing bank account, and generate non-taxable income from chess related activities.

Section 501.c.(3) deals with nonprofit organizations such as churches, colleges, and hospitals. These organizations pay no income tax on those activities that are related to their central purpose, pay no sales tax on their purchases, get special postage rates, and can offer donors tax write-offs on gifts. Only a few of the largest chess clubs in the country have managed to acquire this status, and all have had to endure long legal battles with the IRS along the way.

Given the rates for legal fees in our area, I do not believe we have the funds to acquire nonprofit status at this time. Perhaps in the future we could reconsider the issue, especially if we were to locate an attorney willing to work for us at a significantly reduced rate.

The club has funds to carry itself through the year, but we are still spending more money than we are receiving. We have already taken steps to reduce the cost of the newsletter and we are pursuing the ideas mentioned in the March/April newsletter. Please contact one of the club officers if you have any other suggestions for how the club might improve its financial situation.

Correction/Clarification

In the last issue of the newsletter (March/April 2000), I listed the regular members who are eligible to receive the newsletter for the remainder of this year. Unfortunately, I neglected to include our lifetime members in that listing. Part of the lifetime membership honor is a lifetime subscription to the newsletter. This is has not changed and all lifetime members will continue to receive the newsletter as promised. Our records indicate that the following individuals are lifetime members:

- Don Anderson
- Louis Buccino
- Jay Ryan
- Jim White
- Margaret Brakel
- Roy Eikerenkoetter
- Will Thalheimer

Please inform us if this list is in error.

K

The WCCC Wednesday Night TD’s for 2000

Dave Bolig	(610) 323-5539	dbolig@msn.com
Greg Shaffer	(610) 284-2072	greg@shaffer.net
Roy Eikerenkoetter	(610) 627-1106	eikeren@aol.com
Don Anderson	(610) 578-2051	dranders@us.ibm.com

Please contact Roy Eikerenkoetter if you are interested in leaning how to become a tournament director.

WCCC Officers

Michael Bury, President
 Dave Bolig, Chief TD
 Jack Maynard, Secretary
 Mark Lucas, Treasurer
 Greg Shaffer, Newsletter Editor

Solution to Just Solve It: 1...Qxh4! 2.Nxh4 Rg1+ 3.K c2 Ba4+ 4.K d2 c3+ 5.K d3 Bb5+ 6.K xd4 Bxe2 7.K xc3 Rg4 follow.

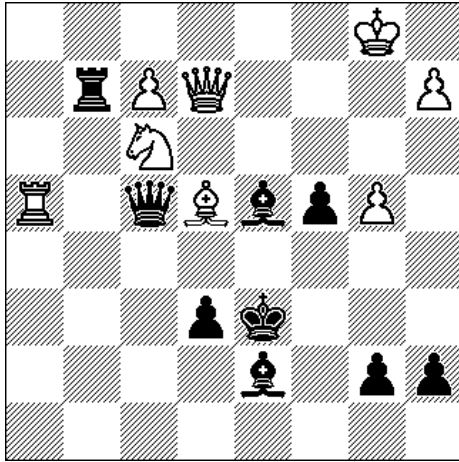
This month we are transitioning from *Grin ‘N Solve It* to *Just Solve It*. The positions will be from actual games and I will be including the entire game score. Here is the game score for this month’s position:

Vaganian,Rafael - Murey,Yaacov [C04]USSR, 1973

```
1.e4 e6 2.d4 d5 3.♘d2 ♘c6 4.♘gf3 ♘f6 5.e5 ♘e4
6.♘d3 ♘xd2 7.♘xd2 ♘b4 8.♘xb4 ♘xb4+ 9.c3 ♘e7
10.h4 ♘d7 11.♞h3 c5 12.dxc5 ♞c7 13.♞e2 ♘xc5
14.♘g3 g6 15.h5 0-0-0 16.0-0-0 ♞df8 17.♞b1 f6
18.hxg6 hxg6 19.♞xg6 fxе5 20.♞g7 e4 21.♘xe4
♞hg8 22.♞xg8 ♞xg8 23.♘d3 ♞xg2 24.♞h1 ♞f4
25.♞h8+ ♞c7 26.♞h7 ♞d6 27.b4 ♘b6 28.c4 dxc4
29.♘e4 ♘d4 30.♞h4 ♞xh4 31.♘xh4 ♞g1+ 32.♞c2
♘a4+ 33.♞d2 c3+ 34.♞d3 ♘b5+ 35.♞xd4 ♘xe2
36.♞xc3 ♞g4 37.♘f3 ♞xh4 38.♘xe2 ♞h2 39.♘d1
♞xf2 0-1
```

K

Just Solve It



Black to play and win
(material advantage)

THE WEST CHESSER
RANK AND FILE NEWSLETTER
4126 Garrett Road
Drexel Hill, PA 19026